

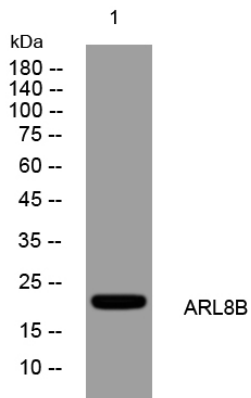


# ARL8B rabbit pAb

<b>Catalog No</b>	YP-Ab-11790
<b>Isotype</b>	IgG
<b>Reactivity</b>	Human; Mouse; Rat
<b>Applications</b>	WB
<b>Gene Name</b>	ARL8B ARL10C GIE1
<b>Protein Name</b>	ARL8B
<b>Immunogen</b>	Synthesized peptide derived from human ARL8B AA range: 9-59
<b>Specificity</b>	This antibody detects endogenous levels of ARL8B at Human/Mouse/Rat
<b>Formulation</b>	Liquid in PBS containing 50% glycerol, 0.5% BSA and 0.02% sodium azide.
<b>Source</b>	Polyclonal, Rabbit, IgG
<b>Purification</b>	The antibody was affinity-purified from rabbit serum by affinity-chromatography using specific immunogen.
<b>Dilution</b>	WB 1: 500-2000
<b>Concentration</b>	1 mg/ml
<b>Purity</b>	≥90%
<b>Storage Stability</b>	-20°C/1 year
<b>Synonyms</b>	
<b>Observed Band</b>	
<b>Cell Pathway</b>	Late endosome membrane . Lysosome membrane . Cytoplasm, cytoskeleton, spindle . Cell projection, axon . Cell junction, synapse . Cytolytic granule membrane . GTP-bound form resides on lysosomal membranes, whereas GDP-bound form is likely associated with microtubular structures (PubMed:16650381). Localizes with microtubules at the spindle mid-zone during mitosis. In dendritic cells, localizes to MHC II+ compartments (By similarity). .
<b>Tissue Specificity</b>	Ubiquitously expressed.
<b>Function</b>	function: May play a role in lysosomes motility (PubMed:16537643). May play a role in chromosomes segregation (PubMed:15331635)., similarity: Belongs to the small GTPase superfamily. Arf family., subcellular location: According to PubMed:15331635 it localizes with microtubules at the spindle mid-zone during mitosis., subunit: Interacts with tubulin., tissue specificity: Ubiquitously expressed.,
<b>Background</b>	
<b>matters needing attention</b>	Avoid repeated freezing and thawing!

**Usage suggestions**

This product can be used in immunological reaction related experiments. For more information, please consult technical personnel.

**Products Images**

Western blot analysis of lysates from K562 cells, primary antibody was diluted at 1:1000, 4° over night