



EMAL4 rabbit pAb

Catalog No	YP-Ab-11789
Isotype	IgG
Reactivity	Human; Mouse
Applications	WB
Gene Name	EML4 C2orf2 EMAPL4
Protein Name	EMAL4
Immunogen	Synthesized peptide derived from human EMAL4 AA range: 398-448
Specificity	This antibody detects endogenous levels of EMAL4 at Human/Mouse
Formulation	Liquid in PBS containing 50% glycerol, 0.5% BSA and 0.02% sodium azide.
Source	Polyclonal, Rabbit,IgG
Purification	The antibody was affinity-purified from rabbit serum by affinity-chromatography using specific immunogen.
Dilution	WB 1: 500-2000
Concentration	1 mg/ml
Purity	≥90%
Storage Stability	-20°C/1 year
Synonyms	
Observed Band	
Cell Pathway	Cytoplasm, cytoskeleton . Cytoplasm . Cytoplasm, cytoskeleton, spindle . Cytoplasm, cytoskeleton, microtubule organizing center . Midbody . Localizes to microtubules (MTs) during interphase with a significantly reduced affinity for MTs during mitosis. .
Tissue Specificity	
Function	developmental stage:Strongly overexpressed during mitosis.,function:May modify the assembly dynamics of microtubules, such that microtubules are slightly longer, but more dynamic.,similarity:Belongs to the WD repeat EMAP family.,similarity:Contains 9 WD repeats.,
Background	This gene is a member of the echinoderm microtubule associated protein-like family. The encoded WD-repeat protein may be involved in microtubule formation. Abnormal fusion of parts of this gene with portions of the anaplastic lymphoma receptor tyrosine kinase gene, which generates EML4-ALK fusion transcripts, is one of the primary mutations associated with non-small cell lung cancer. Alternative splicing of this gene results in two transcript variants. [provided by RefSeq, Jan 2015],

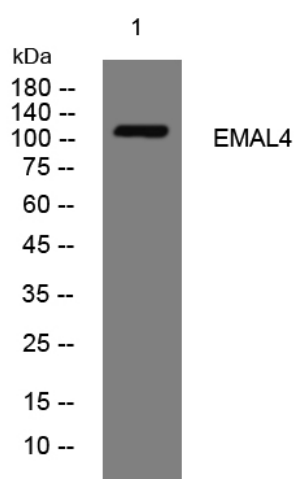
matters needing attention

Avoid repeated freezing and thawing!

Usage suggestions

This product can be used in immunological reaction related experiments. For more information, please consult technical personnel.

Products Images



Western blot analysis of lysates from Jarkat cells, primary antibody was diluted at 1:1000, 4°over night