



TCEA1 rabbit pAb

Catalog No	YP-Ab-11778
Isotype	IgG
Reactivity	Human; Mouse; Rat
Applications	WB
Gene Name	TCEA1 GTF2S TFIIS
Protein Name	TCEA1
Immunogen	Synthesized peptide derived from human TCEA1 AA range: 50-100
Specificity	This antibody detects endogenous levels of TCEA1 at Human/Mouse/Rat
Formulation	Liquid in PBS containing 50% glycerol, 0.5% BSA and 0.02% sodium azide.
Source	Polyclonal, Rabbit, IgG
Purification	The antibody was affinity-purified from rabbit serum by affinity-chromatography using specific immunogen.
Dilution	WB 1: 500-2000
Concentration	1 mg/ml
Purity	≥90%
Storage Stability	-20°C/1 year
Synonyms	
Observed Band	
Cell Pathway	Nucleus.
Tissue Specificity	
Function	alternative products: Additional isoforms seem to exist, disease: A chromosomal rearrangement involving TCEA1 may be a cause of salivary gland pleiomorphic adenomas (PA) [181030]. Pleiomorphic adenomas are the most common benign epithelial tumors of the salivary gland. Translocation t(3;8)(p21;q12) with PLAG1., function: Necessary for efficient RNA polymerase II transcription elongation past template-encoded arresting sites. The arresting sites in DNA have the property of trapping a certain fraction of elongating RNA polymerases that pass through, resulting in locked ternary complexes. Cleavage of the nascent transcript by S-II allows the resumption of elongation from the new 3'-terminus., miscellaneous: S-II binds to RNA-polymerase II in the absence of transcription., PTM: Phosphorylated upon DNA damage, probably by ATM or ATR., similarity: Belongs to the TFS-II family., similarity: Contains 1 TFIIS
Background	

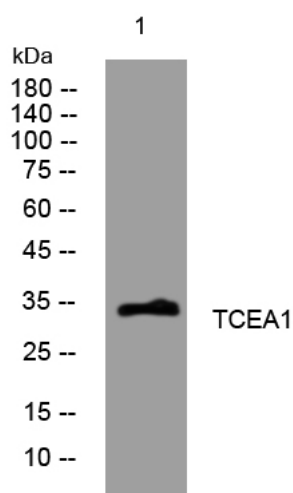
matters needing attention

Avoid repeated freezing and thawing!

Usage suggestions

This product can be used in immunological reaction related experiments. For more information, please consult technical personnel.

Products Images



Western blot analysis of lysates from Jarkat cells, primary antibody was diluted at 1:1000, 4°over night