

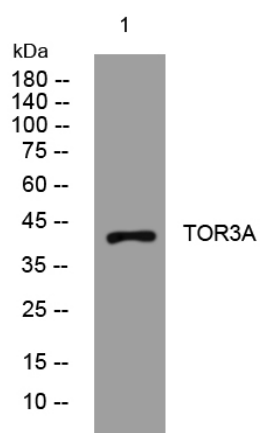


TOR3A rabbit pAb

Catalog No	YP-Ab-11772
Isotype	IgG
Reactivity	Human; Mouse; Rat
Applications	WB
Gene Name	TOR3A ADIR
Protein Name	TOR3A
Immunogen	Synthesized peptide derived from human TOR3A AA range: 151-201
Specificity	This antibody detects endogenous levels of TOR3A at Human/Mouse/Rat
Formulation	Liquid in PBS containing 50% glycerol, 0.5% BSA and 0.02% sodium azide.
Source	Polyclonal, Rabbit, IgG
Purification	The antibody was affinity-purified from rabbit serum by affinity-chromatography using specific immunogen.
Dilution	WB 1: 500-2000
Concentration	1 mg/ml
Purity	≥90%
Storage Stability	-20°C/1 year
Synonyms	
Observed Band	
Cell Pathway	Cytoplasm. Endoplasmic reticulum lumen.
Tissue Specificity	Ubiquitously expressed. Highest expression in stomach, salivary glands and lymph nodes. Isoform 2 is expressed in placenta.
Function	similarity: Belongs to the clpA/clpB family. Torsin subfamily., tissue specificity: Ubiquitously expressed. Highest expression in stomach, salivary glands and lymph nodes. Isoform 2 is expressed in placenta.,
Background	
matters needing attention	Avoid repeated freezing and thawing!
Usage suggestions	This product can be used in immunological reaction related experiments. For more information, please consult technical personnel.



Products Images



Western blot analysis of lysates from A431 cells,
primary antibody was diluted at 1:1000, 4° over night