



ZFYV1 rabbit pAb

Catalog No	YP-Ab-11766
Isotype	IgG
Reactivity	Human; Mouse
Applications	WB
Gene Name	ZFYVE1 DFCP1 KIAA1589 TAFF1 ZNFN2A1 PP10436
Protein Name	ZFYV1
Immunogen	Synthesized peptide derived from human ZFYV1 AA range: 318-368
Specificity	This antibody detects endogenous levels of ZFYV1 at Human/Mouse
Formulation	Liquid in PBS containing 50% glycerol, 0.5% BSA and 0.02% sodium azide.
Source	Polyclonal, Rabbit,IgG
Purification	The antibody was affinity-purified from rabbit serum by affinity-chromatography using specific immunogen.
Dilution	WB 1: 500-2000
Concentration	1 mg/ml
Purity	≥90%
Storage Stability	-20°C/1 year
Synonyms	
Observed Band	
Cell Pathway	Golgi apparatus, Golgi stack . Golgi apparatus . Endoplasmic reticulum . Lipid droplet . Preautophagosomal structure . Mitochondrion . Resides predominantly in the cisternal stacks of the Golgi (PubMed:11256955). Colocalizes with TRIM13 on the perinuclear endoplasmic reticulum (PubMed:22178386). During starvation conditions, localizes to omegasomes which are endoplasmic reticulum connected strutures at the origin of preautophagosomal structures (PubMed:31293035, PubMed:25876663). Localizes to lipid droplets in the presence of oleic acid (PubMed:31293035, PubMed:30970241). .
Tissue Specificity	[Isoform 2]: Highly expressed in heart. Also detected in the testis. ; [Isoform 1]: Expressed in all tissues examined, including, brain, placenta, lung, liver, skeletal muscle, pancreas and kidney. Highly expressed in heart.
Function	sequence caution:Translated as Trp.,similarity:Contains 2 FYVE-type zinc fingers.,subcellular location:Resides predominantly in the cisternal stacks of the Golgi.,subunit:Binds to phosphatidylinositol-3-phosphate (PtdIns3P) through its FYVE-type zinc finger.,tissue specificity:Isoform 1 was expressed in all tissues examined, including, brain, placenta, lung, liver, skeletal muscle, pancreas and kidney. Both isoforms, 1 and 2 showed a high expression in heart. Isoform 2 is also detected in the testis.,



Background

The FYVE domain mediates the recruitment of proteins involved in membrane trafficking and cell signaling to phosphatidylinositol 3-phosphate-containing membranes. This protein contains two zinc-binding FYVE domains in tandem and is reported to localize to the Golgi apparatus. Alternative splicing results in multiple transcript variants. [provided by RefSeq, Aug 2013],

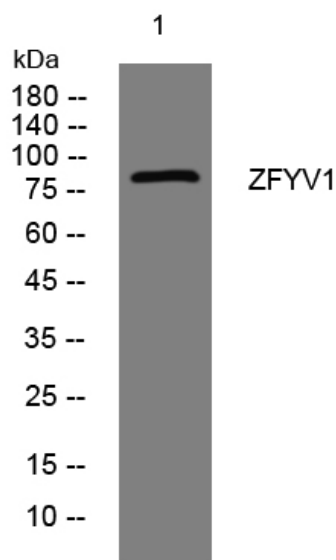
matters needing attention

Avoid repeated freezing and thawing!

Usage suggestions

This product can be used in immunological reaction related experiments. For more information, please consult technical personnel.

Products Images



Western blot analysis of lysates from HpeG2 cells, primary antibody was diluted at 1:1000, 4° over night