

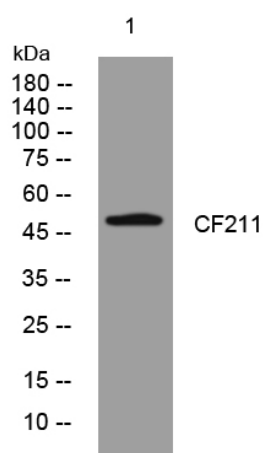


CF211 rabbit pAb

Catalog No	YP-Ab-11762
Isotype	IgG
Reactivity	Human; Mouse; Rat
Applications	WB
Gene Name	C6orf211
Protein Name	CF211
Immunogen	Synthesized peptide derived from human CF211 AA range: 279-329
Specificity	This antibody detects endogenous levels of CF211 at Human/Mouse/Rat
Formulation	Liquid in PBS containing 50% glycerol, 0.5% BSA and 0.02% sodium azide.
Source	Polyclonal, Rabbit, IgG
Purification	The antibody was affinity-purified from rabbit serum by affinity-chromatography using specific immunogen.
Dilution	WB 1: 500-2000
Concentration	1 mg/ml
Purity	≥90%
Storage Stability	-20°C/1 year
Synonyms	
Observed Band	
Cell Pathway	
Tissue Specificity	
Function	similarity: Belongs to the UPF0364 family.,
Background	
matters needing attention	Avoid repeated freezing and thawing!
Usage suggestions	This product can be used in immunological reaction related experiments. For more information, please consult technical personnel.



Products Images



Western blot analysis of lysates from MDA-MB cells,
primary antibody was diluted at 1:1000, 4° over night