



# MTCH1 rabbit pAb

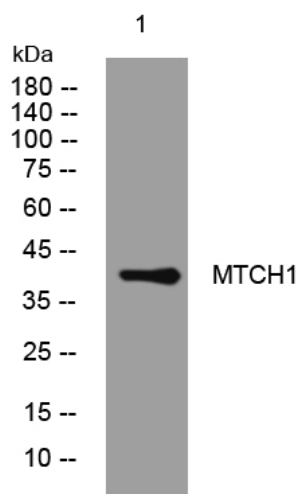
<b>Catalog No</b>	YP-Ab-11749
<b>Isotype</b>	IgG
<b>Reactivity</b>	Human; Mouse
<b>Applications</b>	WB;ELISA;IHC
<b>Gene Name</b>	MTCH1 PSAP CGI-64 UNQ1871/PRO4314
<b>Protein Name</b>	MTCH1
<b>Immunogen</b>	Synthesized peptide derived from human MTCH1 AA range: 235-285
<b>Specificity</b>	This antibody detects endogenous levels of MTCH1 at Human/Mouse
<b>Formulation</b>	Liquid in PBS containing 50% glycerol, 0.5% BSA and 0.02% sodium azide.
<b>Source</b>	Polyclonal, Rabbit,IgG
<b>Purification</b>	The antibody was affinity-purified from rabbit serum by affinity-chromatography using specific immunogen.
<b>Dilution</b>	WB 1:500-2000;IHC-p 1:50-300; ELISA 2000-20000
<b>Concentration</b>	1 mg/ml
<b>Purity</b>	≥90%
<b>Storage Stability</b>	-20°C/1 year
<b>Synonyms</b>	
<b>Observed Band</b>	
<b>Cell Pathway</b>	Mitochondrion outer membrane ; Multi-pass membrane protein .
<b>Tissue Specificity</b>	Widely expressed with a predominant expression in brain.
<b>Function</b>	function:Potential mitochondrial transporter. May play a role in apoptosis.,similarity:Belongs to the mitochondrial carrier family.,similarity:Contains 2 Solcar repeats.,subunit:Interacts with PSEN1.,tissue specificity:Widely expressed with a predominant expression in brain.,
<b>Background</b>	This gene encodes a member of the mitochondrial carrier family. The encoded protein is localized to the mitochondrion inner membrane and induces apoptosis independent of the proapoptotic proteins Bax and Bak. Pseudogenes on chromosomes 6 and 11 have been identified for this gene. Alternatively spliced transcript variants encoding multiple isoforms have been observed. [provided by RefSeq, Oct 2012],
<b>matters needing attention</b>	Avoid repeated freezing and thawing!



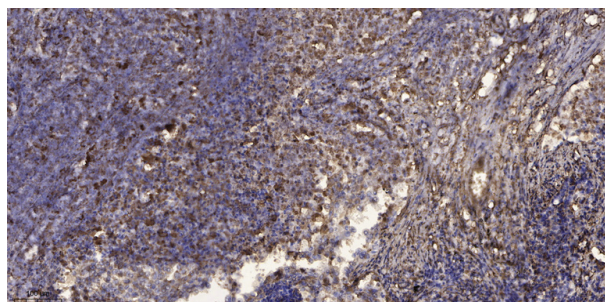
## Usage suggestions

This product can be used in immunological reaction related experiments. For more information, please consult technical personnel.

## Products Images



Western blot analysis of lysates from A431 cells, primary antibody was diluted at 1:1000, 4° over night



Immunohistochemical analysis of paraffin-embedded human Squamous cell carcinoma of lung. 1, Antibody was diluted at 1:200(4° overnight). 2, Tris-EDTA, pH9.0 was used for antigen retrieval. 3, Secondary antibody was diluted at 1:200(room temperature, 45min).