



# METK2 rabbit pAb

<b>Catalog No</b>	YP-Ab-11729
<b>Isotype</b>	IgG
<b>Reactivity</b>	Human; Mouse; Rat
<b>Applications</b>	WB; ELISA; IHC
<b>Gene Name</b>	MAT2A AMS2 MATA2
<b>Protein Name</b>	METK2
<b>Immunogen</b>	Synthesized peptide derived from human METK2 AA range: 294-344
<b>Specificity</b>	This antibody detects endogenous levels of METK2 at Human/Mouse/Rat
<b>Formulation</b>	Liquid in PBS containing 50% glycerol, 0.5% BSA and 0.02% sodium azide.
<b>Source</b>	Polyclonal, Rabbit, IgG
<b>Purification</b>	The antibody was affinity-purified from rabbit serum by affinity-chromatography using specific immunogen.
<b>Dilution</b>	WB 1:500-2000; IHC-p 1:50-300; ELISA 2000-20000
<b>Concentration</b>	1 mg/ml
<b>Purity</b>	≥90%
<b>Storage Stability</b>	-20°C/1 year
<b>Synonyms</b>	
<b>Observed Band</b>	
<b>Cell Pathway</b>	cytosol, methionine adenosyltransferase complex,
<b>Tissue Specificity</b>	Detected in kidney.
<b>Function</b>	catalytic activity: ATP + L-methionine + H <sub>2</sub> O = phosphate + diphosphate + S-adenosyl-L-methionine., cofactor: Binds 1 potassium ion per subunit., cofactor: Binds 2 divalent ions per subunit. Magnesium or cobalt., function: Catalyzes the formation of S-adenosylmethionine from methionine and ATP., pathway: Amino-acid biosynthesis; S-adenosyl-L-methionine biosynthesis; S-adenosyl-L-methionine from L-methionine: step 1/1., PTM: The alpha' subunit is a post-translationally modified version of MAT2A., similarity: Belongs to the AdoMet synthetase family., subunit: Heterotetramer composed of 2 catalytic alpha subunits (alpha and alpha') (MAT2A) and 1 copy of beta subunit (MAT2B).,
<b>Background</b>	The protein encoded by this gene catalyzes the production of S-adenosylmethionine (AdoMet) from methionine and ATP. AdoMet is the key methyl donor in cellular processes. [provided by RefSeq, Jun 2011],



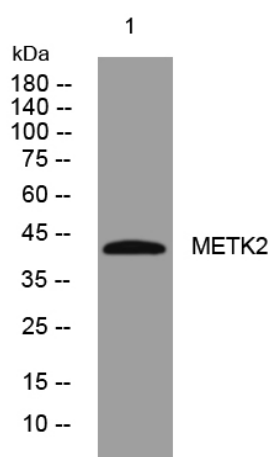
### matters needing attention

Avoid repeated freezing and thawing!

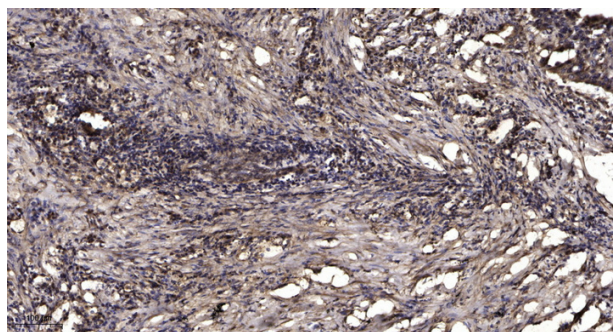
### Usage suggestions

This product can be used in immunological reaction related experiments. For more information, please consult technical personnel.

## Products Images



Western blot analysis of lysates from MCF-7 cells, primary antibody was diluted at 1:1000, 4° over night



Immunohistochemical analysis of paraffin-embedded human Squamous cell carcinoma of lung. 1, Antibody was diluted at 1:200(4° overnight). 2, Tris-EDTA, pH9.0 was used for antigen retrieval. 3, Secondary antibody was diluted at 1:200(room temperature, 45min).