

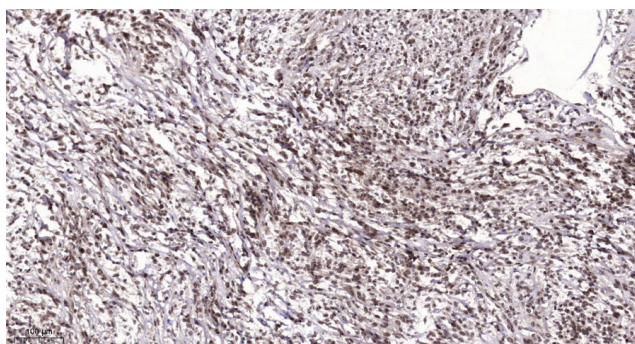


DPY30 rabbit pAb

Catalog No	YP-Ab-11718
Isotype	IgG
Reactivity	Human; Mouse; Rat
Applications	IHC; IF
Gene Name	DPY30
Protein Name	DPY30
Immunogen	Synthesized peptide derived from human DPY30 AA range: 39-89
Specificity	This antibody detects endogenous levels of DPY30 at Human/Mouse/Rat
Formulation	Liquid in PBS containing 50% glycerol, 0.5% BSA and 0.02% sodium azide.
Source	Polyclonal, Rabbit, IgG
Purification	The antibody was affinity-purified from rabbit serum by affinity-chromatography using specific immunogen.
Dilution	IHC-p 1: 50-200. IF 1:50-200
Concentration	1 mg/ml
Purity	≥90%
Storage Stability	-20°C/1 year
Synonyms	
Observed Band	
Cell Pathway	Nucleus . Golgi apparatus, trans-Golgi network . Associated with chromatin at regions enriched in histone H3 trimethylated at 'Lys-4. Highly enriched in gene promoter regions and 5' UTRs, but not in downstream regions of genes or 3' UTRs (By similarity). .
Tissue Specificity	
Function	similarity:Belongs to the dpy-30 family.,subunit:Component of MLL-containing complexes (named MLL, ASCOM, MLL2/MLL3 or MLL3/MLL4 complex): at least composed ASH2L, RBBP5, DPY30, WDR5, one or several histone methyltransferases (MLL, MLL2, MLL3 and/or MLL4), and the facultative components MEN1, HCFC1, HCFC2, NCOA6, KDM6A, PAXIP1/PTIP and C16orf53/PA1.,
Background	This gene encodes an integral core subunit of the SET1/MLL family of H3K4 methyltransferases. The encoded protein directly controls cell cycle regulators and plays an important role in the proliferation and differentiation of human hematopoietic progenitor cells. [provided by RefSeq, Mar 2016],
matters needing attention	Avoid repeated freezing and thawing!

**Usage suggestions**

This product can be used in immunological reaction related experiments. For more information, please consult technical personnel.

Products Images

Immunohistochemical analysis of paraffin-embedded human Colon cancer. 1, Antibody was diluted at 1:200(4° overnight). 2, Tris-EDTA,pH9.0 was used for antigen retrieval. 3,Secondary antibody was diluted at 1:200(room temperature, 45min).