

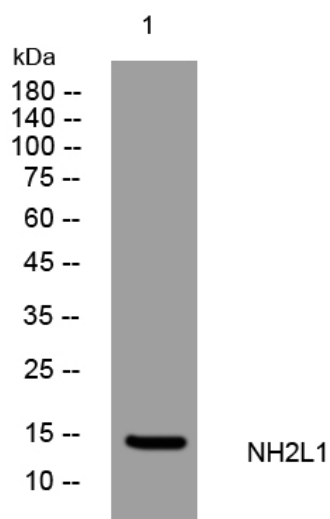


NH2L1 rabbit pAb

Catalog No	YP-Ab-11705
Isotype	IgG
Reactivity	Human; Mouse; Rat
Applications	WB
Gene Name	NHP2L1
Protein Name	NH2L1
Immunogen	Synthesized peptide derived from human NH2L1 AA range: 33-83
Specificity	This antibody detects endogenous levels of NH2L1 at Human/Mouse/Rat
Formulation	Liquid in PBS containing 50% glycerol, 0.5% BSA and 0.02% sodium azide.
Source	Polyclonal, Rabbit, IgG
Purification	The antibody was affinity-purified from rabbit serum by affinity-chromatography using specific immunogen.
Dilution	WB 1: 500-2000
Concentration	1 mg/ml
Purity	≥90%
Storage Stability	-20°C/1 year
Synonyms	
Observed Band	
Cell Pathway	Nucleus . Nucleus, nucleolus . Concentrated in the dense fibrillar component of the nucleolus. .
Tissue Specificity	Ubiquitous.
Function	function: Binds to the 5'-stem-loop of U4 snRNA and may play a role in the late stage of spliceosome assembly. The protein undergoes a conformational change upon RNA-binding., similarity: Belongs to the ribosomal protein L7Ae family., subcellular location: Concentrated in the dense fibrillar component of the nucleolus., subunit: Interacts with RAD17., tissue specificity: Ubiquitous.,
Background	Originally named because of its sequence similarity to the <i>Saccharomyces cerevisiae</i> NHP2 (non-histone protein 2), this protein appears to be a highly conserved nuclear protein that is a component of the [U4/U6.U5] tri-snRNP. It binds to the 5' stem-loop of U4 snRNA. Two transcript variants encoding the same protein have been found for this gene. [provided by RefSeq, Jul 2008],
matters needing attention	Avoid repeated freezing and thawing!

Usage suggestions

This product can be used in immunological reaction related experiments. For more information, please consult technical personnel.

Products Images

Western blot analysis of lysates from A549 cells,
primary antibody was diluted at 1:1000, 4°over night