

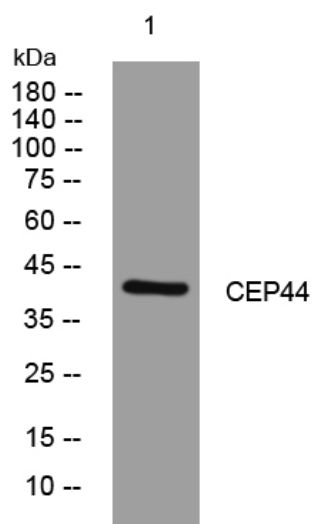


CEP44 rabbit pAb

Catalog No	YP-Ab-11692
Isotype	IgG
Reactivity	Human; Mouse; Rat
Applications	WB
Gene Name	CEP44 KIAA1712
Protein Name	CEP44
Immunogen	Synthesized peptide derived from human CEP44 AA range: 298-348
Specificity	This antibody detects endogenous levels of CEP44 at Human/Mouse/Rat
Formulation	Liquid in PBS containing 50% glycerol, 0.5% BSA and 0.02% sodium azide.
Source	Polyclonal, Rabbit, IgG
Purification	The antibody was affinity-purified from rabbit serum by affinity-chromatography using specific immunogen.
Dilution	WB 1: 500-2000
Concentration	1 mg/ml
Purity	≥90%
Storage Stability	-20°C/1 year
Synonyms	
Observed Band	
Cell Pathway	Cytoplasm, cytoskeleton, microtubule organizing center, centrosome . Cytoplasm, cytoskeleton, microtubule organizing center, centrosome, centriole . Cytoplasm, cytoskeleton, spindle pole . Midbody . Localizes to the proximal end of mother and daughter centrioles. .
Tissue Specificity	
Function	
Background	
matters needing attention	Avoid repeated freezing and thawing!
Usage suggestions	This product can be used in immunological reaction related experiments. For more information, please consult technical personnel.



Products Images



Western blot analysis of lysates from HEK293 cells,
primary antibody was diluted at 1:1000, 4° over night