

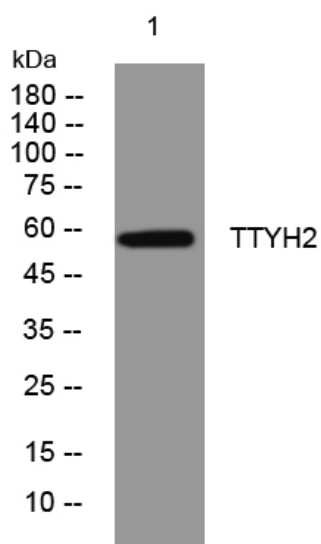


TTYH2 rabbit pAb

| | |
|----------------------------------|--|
| Catalog No | YP-Ab-11686 |
| Isotype | IgG |
| Reactivity | Human; Mouse |
| Applications | WB |
| Gene Name | TTYH2 C17orf29 |
| Protein Name | TTYH2 |
| Immunogen | Synthesized peptide derived from human TTYH2 AA range: 319-369 |
| Specificity | This antibody detects endogenous levels of TTYH2 at Human/Mouse |
| Formulation | Liquid in PBS containing 50% glycerol, 0.5% BSA and 0.02% sodium azide. |
| Source | Polyclonal, Rabbit,IgG |
| Purification | The antibody was affinity-purified from rabbit serum by affinity-chromatography using specific immunogen. |
| Dilution | WB 1: 500-2000 |
| Concentration | 1 mg/ml |
| Purity | ≥90% |
| Storage Stability | -20°C/1 year |
| Synonyms | |
| Observed Band | |
| Cell Pathway | Cell membrane ; Multi-pass membrane protein . |
| Tissue Specificity | Expressed at higher level in brain and testis and at lower levels in heart, ovary, spleen and peripheral blood leukocytes. Up-regulated in 13 of 16 renal cell carcinoma samples examined. Up-regulated in colon carcinoma. |
| Function | function:Probable large-conductance Ca(2+)-activated chloride channel. May play a role in Ca(2+) signal transduction. May be involved in cell proliferation and cell aggregation.,similarity:Belongs to the tweety family.,tissue specificity:Expressed at higher level in brain and testis and at lower levels in heart, ovary, spleen and peripheral blood leukocytes. Up-regulated in 13 of 16 renal cell carcinoma samples examined. Up-regulated in colon carcinoma., |
| Background | This gene encodes a member of the tweety family of proteins. Members of this family function as chloride anion channels. The encoded protein functions as a calcium(2+)-activated large conductance chloride(-) channel, and may play a role in kidney tumorigenesis. Two transcript variants encoding distinct isoforms have been identified for this gene. [provided by RefSeq, Jul 2008], |
| matters needing attention | Avoid repeated freezing and thawing! |

Usage suggestions

This product can be used in immunological reaction related experiments. For more information, please consult technical personnel.

Products Images

Western blot analysis of lysates from 293T cells,
primary antibody was diluted at 1:1000, 4° over night