

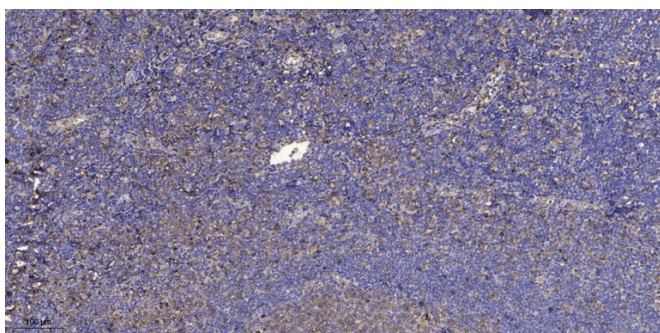


DDA1 rabbit pAb

Catalog No	YP-Ab-11668
Isotype	IgG
Reactivity	Human; Mouse
Applications	IHC;IF
Gene Name	DDA1 C19orf58 PCIA1
Protein Name	DDA1
Immunogen	Synthesized peptide derived from human DDA1 AA range: 49-99
Specificity	This antibody detects endogenous levels of DDA1 at Human/Mouse
Formulation	Liquid in PBS containing 50% glycerol, 0.5% BSA and 0.02% sodium azide.
Source	Polyclonal, Rabbit,IgG
Purification	The antibody was affinity-purified from rabbit serum by affinity-chromatography using specific immunogen.
Dilution	IHC-p 1: 50-200. IF 1:50-200
Concentration	1 mg/ml
Purity	≥90%
Storage Stability	-20°C/1 year
Synonyms	
Observed Band	
Cell Pathway	
Tissue Specificity	
Function	function:May be involved in ubiquitination and subsequent proteasomal degradation of target proteins. Component of the DDD-E2 complexes which may provide a platform for interaction with CUL4A and WD repeat proteins.,similarity:Belongs to the DDA1 family.,subunit:Part of the DDD core complex containing DET1, DDA1 and DDB1. The DDD core complex recruits a specific UBE2E enzyme, such as UBE2E1, UBE2E2 UBE2E3, to form specific DDD-E2 complexes.,
Background	
matters needing attention	Avoid repeated freezing and thawing!

**Usage suggestions**

This product can be used in immunological reaction related experiments. For more information, please consult technical personnel.

Products Images

Immunohistochemical analysis of paraffin-embedded human tonsil. 1, Antibody was diluted at 1:200(4° overnight). 2, Tris-EDTA,pH9.0 was used for antigen retrieval. 3,Secondary antibody was diluted at 1:200(room temperature, 30min).