

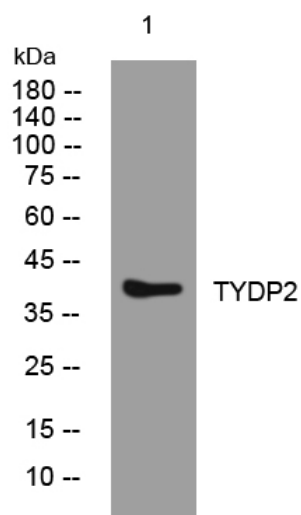


# TYDP2 rabbit pAb

<b>Catalog No</b>	YP-Ab-11667
<b>Isotype</b>	IgG
<b>Reactivity</b>	Human; Mouse; Rat
<b>Applications</b>	WB
<b>Gene Name</b>	TDP2 EAP2 TTRAP AD-022
<b>Protein Name</b>	TYDP2
<b>Immunogen</b>	Synthesized peptide derived from human TYDP2 AA range: 261-311
<b>Specificity</b>	This antibody detects endogenous levels of TYDP2 at Human/Mouse/Rat
<b>Formulation</b>	Liquid in PBS containing 50% glycerol, 0.5% BSA and 0.02% sodium azide.
<b>Source</b>	Polyclonal, Rabbit, IgG
<b>Purification</b>	The antibody was affinity-purified from rabbit serum by affinity-chromatography using specific immunogen.
<b>Dilution</b>	WB 1: 500-2000
<b>Concentration</b>	1 mg/ml
<b>Purity</b>	≥90%
<b>Storage Stability</b>	-20°C/1 year
<b>Synonyms</b>	
<b>Observed Band</b>	
<b>Cell Pathway</b>	Nucleus . Nucleus, PML body . Nucleus, nucleolus . Cytoplasm. Localizes to nucleolar cavities following stress; localization to nucleolus is dependent on PML protein. .; Cytoplasm . (Microbial infection) In case of infection by picornavirus, relocalizes to cytoplasmic sites distinct from those containing viral proteins associated with RNA replication or encapsidation. .
<b>Tissue Specificity</b>	Widely expressed (PubMed:10764746). Highly expressed in various brain regions, including the frontal and occipital lobes, the hippocampus, the striatum and the cerebellum (PubMed:24658003).
<b>Function</b>	
<b>Background</b>	This gene encodes a member of a superfamily of divalent cation-dependent phosphodiesterases. The encoded protein associates with CD40, tumor necrosis factor (TNF) receptor-75 and TNF receptor associated factors (TRAFs), and inhibits nuclear factor-kappa-B activation. This protein has sequence and structural similarities with APE1 endonuclease, which is involved in both DNA repair and the activation of transcription factors. [provided by RefSeq, Jul 2008],
<b>matters needing attention</b>	Avoid repeated freezing and thawing!

**Usage suggestions**

This product can be used in immunological reaction related experiments. For more information, please consult technical personnel.

**Products Images**

Western blot analysis of lysates from 293T cells,  
primary antibody was diluted at 1:1000, 4° over night