

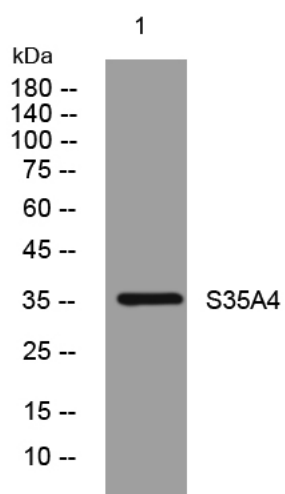


S35A4 rabbit pAb

Catalog No	YP-Ab-11660
Isotype	IgG
Reactivity	Human; Mouse; Rat
Applications	WB
Gene Name	SLC35A4
Protein Name	S35A4
Immunogen	Synthesized peptide derived from human S35A4 AA range: 104-154
Specificity	This antibody detects endogenous levels of S35A4 at Human/Mouse/Rat
Formulation	Liquid in PBS containing 50% glycerol, 0.5% BSA and 0.02% sodium azide.
Source	Polyclonal, Rabbit, IgG
Purification	The antibody was affinity-purified from rabbit serum by affinity-chromatography using specific immunogen.
Dilution	WB 1: 500-2000
Concentration	1 mg/ml
Purity	≥90%
Storage Stability	-20°C/1 year
Synonyms	
Observed Band	
Cell Pathway	Golgi apparatus membrane ; Multi-pass membrane protein .
Tissue Specificity	
Function	miscellaneous: Classified as NST family 1 subfamily D in a phylogenetic study. Family 1 seems to be the most recent in evolution., similarity: Belongs to the nucleotide-sugar transporter family. SLC35A subfamily.,
Background	
matters needing attention	Avoid repeated freezing and thawing!
Usage suggestions	This product can be used in immunological reaction related experiments. For more information, please consult technical personnel.



Products Images



Western blot analysis of lysates from PC-12 cells,
primary antibody was diluted at 1:1000, 4° over night