

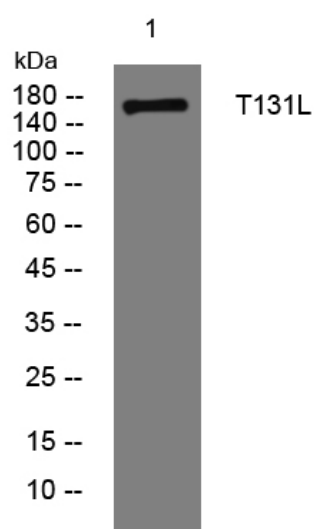


# T131L rabbit pAb

|                                  |  |
|----------------------------------|--|
| <b>Catalog No</b>                | YP-Ab-11650  |
| <b>Isotype</b>                   | IgG  |
| <b>Reactivity</b>                | Human; Mouse   |
| <b>Applications</b>              | WB   |
| <b>Gene Name</b>                 | KIAA0922 TMEM131L  |
| <b>Protein Name</b>              | T131L  |
| <b>Immunogen</b>                 | Synthesized peptide derived from human T131L AA range: 321-371   |
| <b>Specificity</b>               | This antibody detects endogenous levels of T131L at Human/Mouse  |
| <b>Formulation</b>               | Liquid in PBS containing 50% glycerol, 0.5% BSA and 0.02% sodium azide.  |
| <b>Source</b>                    | Polyclonal, Rabbit,IgG   |
| <b>Purification</b>              | The antibody was affinity-purified from rabbit serum by affinity-chromatography using specific immunogen.  |
| <b>Dilution</b>                  | WB 1: 500-2000   |
| <b>Concentration</b>             | 1 mg/ml  |
| <b>Purity</b>                    | ≥90%   |
| <b>Storage Stability</b>         | -20°C/1 year   |
| <b>Synonyms</b>                  |  |
| <b>Observed Band</b>             |  |
| <b>Cell Pathway</b>              | Cell membrane ; Single-pass type I membrane protein . Cytoplasm . During intrathymic development, resides in punctate cytoplasmic structures in DN1 and DN2 cells. In DN3 cells, found in large crescent-shaped membrane structures, which preferentially localize in cell-to-cell contact zones. . ; [Isoform 1]: Endoplasmic reticulum . Transmembrane localization is essential for Wnt signaling inhibition. . ; [Isoform 5]: Cytoplasm . Scattered throughout the cytoplasm in small-sized punctate structures. . |
| <b>Tissue Specificity</b>        | Expressed in thymocytes.   |
| <b>Function</b>                  | similarity:Belongs to the TMEM131 family.,   |
| <b>Background</b>                |  |
| <b>matters needing attention</b> | Avoid repeated freezing and thawing!   |

**Usage suggestions**

This product can be used in immunological reaction related experiments. For more information, please consult technical personnel.

**Products Images**

Western blot analysis of lysates from HCT116 cells, primary antibody was diluted at 1:1000, 4° over night.