

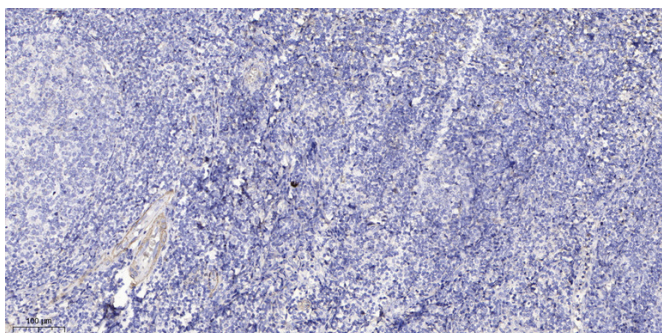


DB133 rabbit pAb

| | |
|----------------------------------|---|
| Catalog No | YP-Ab-11647 |
| Isotype | IgG |
| Reactivity | Human;Rat;Mouse; |
| Applications | IHC;IF |
| Gene Name | DEFB133 |
| Protein Name | DB133 |
| Immunogen | Synthesized peptide derived from human DB133 AA range: 2-52 |
| Specificity | This antibody detects endogenous levels of DB133 at Human |
| Formulation | Liquid in PBS containing 50% glycerol, 0.5% BSA and 0.02% sodium azide. |
| Source | Polyclonal, Rabbit,IgG |
| Purification | The antibody was affinity-purified from rabbit serum by affinity-chromatography using specific immunogen. |
| Dilution | IHC-p 1: 50-200. IF 1:50-200 |
| Concentration | 1 mg/ml |
| Purity | ≥90% |
| Storage Stability | -20°C/1 year |
| Synonyms | |
| Observed Band | |
| Cell Pathway | Secreted . |
| Tissue Specificity | |
| Function | caution:Was termed (Ref.2) DEFB134.,function:Has antibacterial activity .,similarity:Belongs to the beta-defensin family., |
| Background | |
| matters needing attention | Avoid repeated freezing and thawing! |
| Usage suggestions | This product can be used in immunological reaction related experiments. For more information, please consult technical personnel. |



Products Images



Immunohistochemical analysis of paraffin-embedded human tonsil. 1, Antibody was diluted at 1:200(4° overnight). 2, Tris-EDTA,pH9.0 was used for antigen retrieval. 3,Secondary antibody was diluted at 1:200(room temperature, 30min).