



# SDS3 rabbit pAb

<b>Catalog No</b>	YP-Ab-11644
<b>Isotype</b>	IgG
<b>Reactivity</b>	Human; Mouse
<b>Applications</b>	WB;IHC
<b>Gene Name</b>	SUDS3 SAP45 SDS3
<b>Protein Name</b>	SDS3
<b>Immunogen</b>	Synthesized peptide derived from human SDS3 AA range: 96-146
<b>Specificity</b>	This antibody detects endogenous levels of SDS3 at Human/Mouse
<b>Formulation</b>	Liquid in PBS containing 50% glycerol, 0.5% BSA and 0.02% sodium azide.
<b>Source</b>	Polyclonal, Rabbit,IgG
<b>Purification</b>	The antibody was affinity-purified from rabbit serum by affinity-chromatography using specific immunogen.
<b>Dilution</b>	WB 1:500-2000;IHC-p 1:50-300
<b>Concentration</b>	1 mg/ml
<b>Purity</b>	≥90%
<b>Storage Stability</b>	-20°C/1 year
<b>Synonyms</b>	
<b>Observed Band</b>	
<b>Cell Pathway</b>	Nucleus .
<b>Tissue Specificity</b>	Expressed in various cancer cell ines.
<b>Function</b>	domain:The C-terminus is involved in transcriptional repression by HDAC-independent mechanisms.,function:Regulatory protein which represses transcription and augments histone deacetylase activity of HDAC1. May have a potential role in tumor suppressor pathways (By similarity). May function in the assembly and/or enzymatic activity of the mSin3A corepressor complex or in mediating interactions between the complex and other regulatory complexes.,similarity:Belongs to the SDS3 family.,subunit:Homodimer. Component of the SIN3 histone deacetylase (HDAC) corepressor complex. Interacts with SIN3A. Interaction with SIN3B enhances the interaction between SIN3B and HDAC1 to form a complex (By similarity). Interacts with HCFC1. Component of a mSin3A corepressor complex that contains SIN3A, SAP130, SUDS3/SAP45, ARID4B/SAP180, HDAC1 and HDAC2.,tissue specificity:Expressed in various cancer cell ines.
<b>Background</b>	SDS3 is a subunit of the histone deacetylase (see HDAC1; MIM 601241)-dependent SIN3A (MIM 607776) corepressor complex (Fleischer et al.,



2003 [PubMed 12724404]).[supplied by OMIM, Mar 2008],

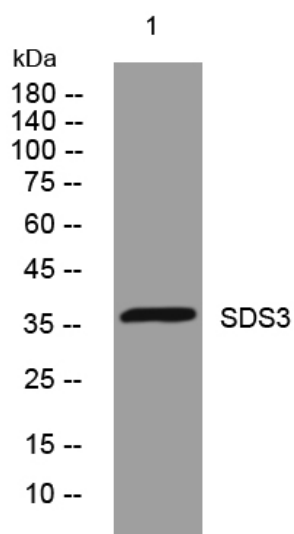
#### matters needing attention

Avoid repeated freezing and thawing!

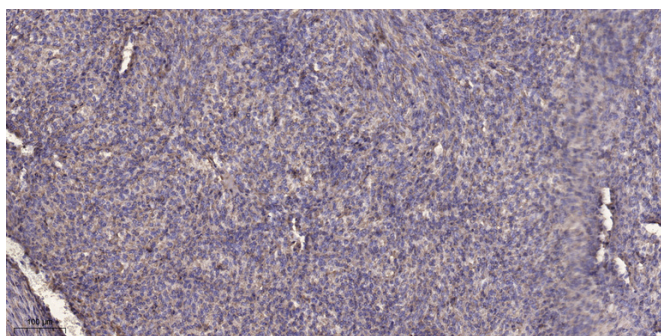
#### Usage suggestions

This product can be used in immunological reaction related experiments. For more information, please consult technical personnel.

### Products Images



Western blot analysis of lysates from 293T cells, primary antibody was diluted at 1:1000, 4° over night



Immunohistochemical analysis of paraffin-embedded human Colon cancer. 1, Antibody was diluted at 1:200(4° overnight). 2, Tris-EDTA, pH9.0 was used for antigen retrieval. 3, Secondary antibody was diluted at 1:200(room temperature, 45min).