



# XPO6 rabbit pAb

<b>Catalog No</b>	YP-Ab-11643
<b>Isotype</b>	IgG
<b>Reactivity</b>	Human; Mouse
<b>Applications</b>	WB
<b>Gene Name</b>	XPO6 KIAA0370 RANBP20
<b>Protein Name</b>	XPO6
<b>Immunogen</b>	Synthesized peptide derived from human XPO6 AA range: 204-254
<b>Specificity</b>	This antibody detects endogenous levels of XPO6 at Human/Mouse
<b>Formulation</b>	Liquid in PBS containing 50% glycerol, 0.5% BSA and 0.02% sodium azide.
<b>Source</b>	Polyclonal, Rabbit,IgG
<b>Purification</b>	The antibody was affinity-purified from rabbit serum by affinity-chromatography using specific immunogen.
<b>Dilution</b>	WB 1: 500-2000
<b>Concentration</b>	1 mg/ml
<b>Purity</b>	≥90%
<b>Storage Stability</b>	-20°C/1 year
<b>Synonyms</b>	
<b>Observed Band</b>	
<b>Cell Pathway</b>	Nucleus . Cytoplasm . Shuttles between the nucleus and the cytoplasm. .
<b>Tissue Specificity</b>	
<b>Function</b>	function:Mediates the nuclear export of actin and profilin-actin complexes in somatic cells.,similarity:Belongs to the exportin family.,similarity:Contains 1 importin N-terminal domain.,subcellular location:Shuttles between the nucleus and the cytoplasm.,subunit:Found in a complex with XPO6, Ran, ACTB and PFN1. Interacts with ACTB. Interacts with ACTB in a RanGTP-dependent manner.,
<b>Background</b>	The protein encoded by this gene is a member of the importin-beta family. Members of this family are regulated by the GTPase Ran to mediate transport of cargo across the nuclear envelope. This protein has been shown to mediate nuclear export of profilin-actin complexes. A pseudogene of this gene is located on the long arm of chromosome 14. Alternative splicing results in multiple transcript variants that encode different protein isoforms. [provided by RefSeq, Aug 2012],

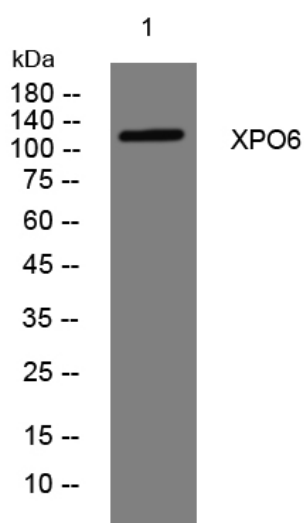
**matters needing attention**

Avoid repeated freezing and thawing!

**Usage suggestions**

This product can be used in immunological reaction related experiments. For more information, please consult technical personnel.

## Products Images



Western blot analysis of lysates from SW480 cells, primary antibody was diluted at 1:1000, 4°over night