



TFB2M rabbit pAb

Catalog No	YP-Ab-11636
Isotype	IgG
Reactivity	Human; Mouse; Rat
Applications	WB
Gene Name	TFB2M NS5ATP5
Protein Name	TFB2M
Immunogen	Synthesized peptide derived from human TFB2M AA range: 192-242
Specificity	This antibody detects endogenous levels of TFB2M at Human/Mouse/Rat
Formulation	Liquid in PBS containing 50% glycerol, 0.5% BSA and 0.02% sodium azide.
Source	Polyclonal, Rabbit, IgG
Purification	The antibody was affinity-purified from rabbit serum by affinity-chromatography using specific immunogen.
Dilution	WB 1: 500-2000
Concentration	1 mg/ml
Purity	≥90%
Storage Stability	-20°C/1 year
Synonyms	
Observed Band	
Cell Pathway	Mitochondrion.
Tissue Specificity	Ubiquitously expressed.
Function	function: S-adenosyl-L-methionine-dependent methyltransferase which specifically dimethylates mitochondrial 12S rRNA at the conserved stem loop. Also required for basal transcription of mitochondrial DNA, probably via its interaction with POLRMT and TFAM. Stimulates transcription independently of the methyltransferase activity. Compared to TFB1M, it activates transcription of mitochondrial DNA more efficiently, while it has less methyltransferase activity. induction: By the nuclear respiratory factors NRF1 and NRF2/GABPB2 and PGC-1 coactivators. similarity: Belongs to the rRNA adenine N(6)-methyltransferase family. KsgA subfamily. subunit: Interacts with mitochondrial RNA polymerase POLRMT. Interacts with TFAM. tissue specificity: Ubiquitously expressed.
Background	

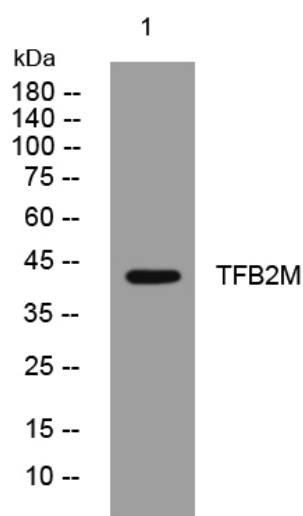
matters needing attention

Avoid repeated freezing and thawing!

Usage suggestions

This product can be used in immunological reaction related experiments. For more information, please consult technical personnel.

Products Images



Western blot analysis of lysates from HeLa cells, primary antibody was diluted at 1:1000, 4° over night