

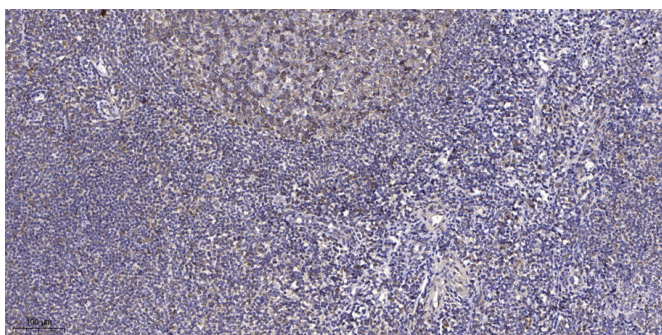


CDC26 rabbit pAb

Catalog No	YP-Ab-11614
Isotype	IgG
Reactivity	Human; Mouse; Rat
Applications	IHC; IF
Gene Name	CDC26 ANAPC12 C9orf17
Protein Name	CDC26
Immunogen	Synthesized peptide derived from human CDC26 AA range: 21-71
Specificity	This antibody detects endogenous levels of CDC26 at Human/Mouse/Rat
Formulation	Liquid in PBS containing 50% glycerol, 0.5% BSA and 0.02% sodium azide.
Source	Polyclonal, Rabbit, IgG
Purification	The antibody was affinity-purified from rabbit serum by affinity-chromatography using specific immunogen.
Dilution	IHC-p 1: 50-200. IF 1:50-200
Concentration	1 mg/ml
Purity	≥90%
Storage Stability	-20°C/1 year
Synonyms	
Observed Band	
Cell Pathway	Nucleus .
Tissue Specificity	
Function	function: Component of the anaphase promoting complex/cyclosome (APC/C), a cell cycle-regulated E3 ubiquitin-protein ligase that controls progression through mitosis and the G1 phase of the cell cycle. May recruit the E2 ubiquitin-conjugating enzymes to the complex., pathway: Protein modification; protein ubiquitination., PTM: Phosphorylated upon DNA damage, probably by ATM or ATR., similarity: Belongs to the CDC26 family., subunit: The APC/C is composed of at least 11 subunits.,
Background	The protein encoded by this gene is highly similar to <i>Saccharomyces cerevisiae</i> Cdc26, a component of cell cycle anaphase-promoting complex (APC). APC is composed of a group of highly conserved proteins and functions as a cell cycle-regulated ubiquitin-protein ligase. APC thus is responsible for the cell cycle regulated proteolysis of various proteins. [provided by RefSeq, Jul 2008],
matters needing attention	Avoid repeated freezing and thawing!

Usage suggestions

This product can be used in immunological reaction related experiments. For more information, please consult technical personnel.

Products Images

Immunohistochemical analysis of paraffin-embedded human tonsil. 1, Antibody was diluted at 1:200(4° overnight). 2, Tris-EDTA,pH9.0 was used for antigen retrieval. 3,Secondary antibody was diluted at 1:200(room temperature, 45min).