



SPG16 rabbit pAb

Catalog No	YP-Ab-11612
Isotype	IgG
Reactivity	Human; Mouse
Applications	WB;ELISA;IHC
Gene Name	SPAG16 PF20
Protein Name	SPG16
Immunogen	Synthesized peptide derived from human SPG16 AA range: 520-570
Specificity	This antibody detects endogenous levels of SPG16 at Human/Mouse
Formulation	Liquid in PBS containing 50% glycerol, 0.5% BSA and 0.02% sodium azide.
Source	Polyclonal, Rabbit,IgG
Purification	The antibody was affinity-purified from rabbit serum by affinity-chromatography using specific immunogen.
Dilution	WB 1:500-2000;IHC-p 1:50-300; ELISA 2000-20000
Concentration	1 mg/ml
Purity	≥90%
Storage Stability	-20°C/1 year
Synonyms	
Observed Band	
Cell Pathway	Cytoplasm . Cytoplasm, cytoskeleton, flagellum axoneme . Cytoplasm, cytoskeleton, cilium axoneme . Cell projection, cilium, flagellum . Detected on the sperm flagellum axoneme. Detected in the central apparatus of the axoneme. Colocalizes with SPAG6 on microtubules (By similarity). .
Tissue Specificity	Isoform 1 is detected in testis. Isoform 4 is detected in testis and brain, and at lower levels in kidney, heart, pancreas, thyroid, ovary, adrenal gland, spinal cord, trachea and liver.
Function	function:Necessary for sperm flagellar function.,similarity:Contains 7 WD repeats.,subcellular location:Detected on the sperm flagellum. Detected in the central apparatus of the axoneme. Colocalizes with SPAG6 on microtubules.,subunit:Interacts with SPAG6.,tissue specificity:Isoform 1 is detected in testis. Isoform 4 is detected in testis and brain, and at lower levels in kidney, heart, pancreas, thyroid, ovary, adrenal gland, spinal cord, trachea and liver.,
Background	Cilia and flagella are comprised of a microtubular backbone, the axoneme, which is organized by the basal body and surrounded by plasma membrane. SPAG16 encodes 2 major proteins that associate with the axoneme of sperm tail and the nucleus of postmeiotic germ cells, respectively (Zhang et al., 2007 [PubMed 17699735]).[supplied by OMIM, Jul 2008],



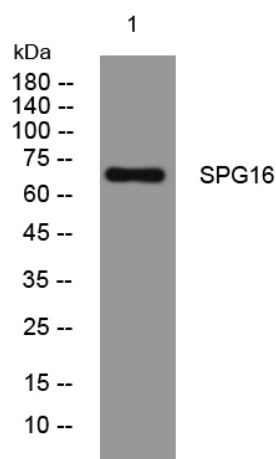
matters needing attention

Avoid repeated freezing and thawing!

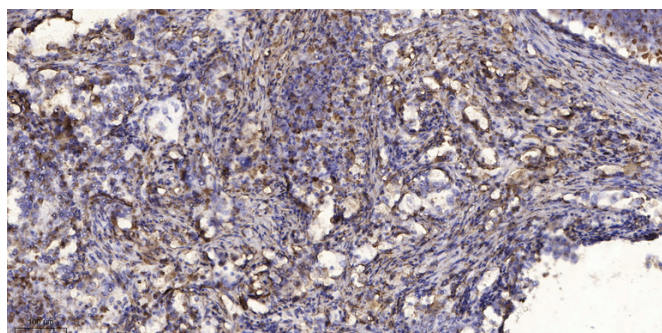
Usage suggestions

This product can be used in immunological reaction related experiments. For more information, please consult technical personnel.

Products Images



Western blot analysis of lysates from U2OS cells, primary antibody was diluted at 1:1000, 4° over night



Immunohistochemical analysis of paraffin-embedded human Squamous cell carcinoma of lung. 1, Antibody was diluted at 1:200(4° overnight). 2, Tris-EDTA, pH9.0 was used for antigen retrieval. 3, Secondary antibody was diluted at 1:200(room temperature, 45min).