

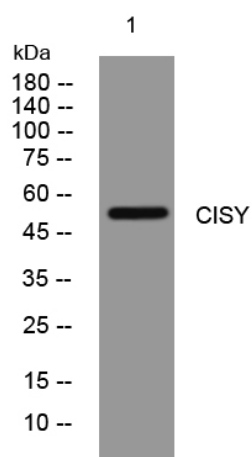


# CISY rabbit pAb

<b>Catalog No</b>	YP-Ab-11601
<b>Isotype</b>	IgG
<b>Reactivity</b>	Human; Mouse; Rat
<b>Applications</b>	WB
<b>Gene Name</b>	CS
<b>Protein Name</b>	CISY
<b>Immunogen</b>	Synthesized peptide derived from human CISY AA range: 272-322
<b>Specificity</b>	This antibody detects endogenous levels of CISY at Human/Mouse/Rat
<b>Formulation</b>	Liquid in PBS containing 50% glycerol, 0.5% BSA and 0.02% sodium azide.
<b>Source</b>	Polyclonal, Rabbit, IgG
<b>Purification</b>	The antibody was affinity-purified from rabbit serum by affinity-chromatography using specific immunogen.
<b>Dilution</b>	WB 1: 500-2000
<b>Concentration</b>	1 mg/ml
<b>Purity</b>	≥90%
<b>Storage Stability</b>	-20°C/1 year
<b>Synonyms</b>	
<b>Observed Band</b>	
<b>Cell Pathway</b>	Mitochondrion matrix.
<b>Tissue Specificity</b>	
<b>Function</b>	catalytic activity: Acetyl-CoA + H <sub>2</sub> O + oxaloacetate = citrate + CoA.; miscellaneous: Citrate synthase is found in nearly all cells capable of oxidative metabolism.; online information: Citrate synthase entry; pathway: Carbohydrate metabolism; tricarboxylic acid cycle.; sequence caution: Intron retention.; similarity: Belongs to the citrate synthase family.; subunit: Homodimer.;
<b>Background</b>	The protein encoded by this gene is a Krebs tricarboxylic acid cycle enzyme that catalyzes the synthesis of citrate from oxaloacetate and acetyl coenzyme A. The enzyme is found in nearly all cells capable of oxidative metabolism. This protein is nuclear encoded and transported into the mitochondrial matrix, where the mature form is found. [provided by RefSeq, Jul 2008],
<b>matters needing attention</b>	Avoid repeated freezing and thawing!

**Usage suggestions**

This product can be used in immunological reaction related experiments. For more information, please consult technical personnel.

**Products Images**

Western blot analysis of lysates from SW480 cells, primary antibody was diluted at 1:1000, 4° over night