



ALG1 rabbit pAb

Catalog No	YP-Ab-11575
Isotype	IgG
Reactivity	Human; Mouse
Applications	WB
Gene Name	ALG1 HMAT1 HMT1 PSEC0061 UNQ861/PRO1870
Protein Name	ALG1
Immunogen	Synthesized peptide derived from human ALG1 AA range: 180-230
Specificity	This antibody detects endogenous levels of ALG1 at Human/Mouse
Formulation	Liquid in PBS containing 50% glycerol, 0.5% BSA and 0.02% sodium azide.
Source	Polyclonal, Rabbit,IgG
Purification	The antibody was affinity-purified from rabbit serum by affinity-chromatography using specific immunogen.
Dilution	WB 1: 500-2000
Concentration	1 mg/ml
Purity	≥90%
Storage Stability	-20°C/1 year
Synonyms	
Observed Band	
Cell Pathway	Endoplasmic reticulum membrane ; Single-pass type II membrane protein .
Tissue Specificity	
Function	catalytic activity:GDP-mannose + chitobiosyldiphosphodolichol = GDP + beta-1,4-D-mannosylchitobiosyldiphosphodolichol.,disease:Defects in ALG1 are the cause of congenital disorder of glycosylation type 1K (CDG1K) [MIM:608540]. CDGs are a family of severe inherited diseases caused by a defect in protein N-glycosylation. They are characterized by under-glycosylated serum proteins. These multisystem disorders present with a wide variety of clinical features, such as disorders of the nervous system development, psychomotor retardation, dysmorphic features, hypotonia, coagulation disorders, and immunodeficiency. The broad spectrum of features reflects the critical role of N-glycoproteins during embryonic development, differentiation, and maintenance of cell functions.,function:Participates in the formation of the lipid-linked precursor oligosaccharide for N-glycosylation. Involved in assembl
Background	The enzyme encoded by this gene catalyzes the first mannosylation step in the biosynthesis of lipid-linked oligosaccharides. This gene is mutated in congenital disorder of glycosylation type 1k. [provided by RefSeq, Dec 2008],

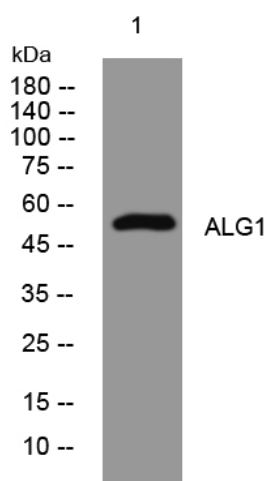
matters needing attention

Avoid repeated freezing and thawing!

Usage suggestions

This product can be used in immunological reaction related experiments. For more information, please consult technical personnel.

Products Images



Western blot analysis of lysates from Jarkat cells, primary antibody was diluted at 1:1000, 4°over night