

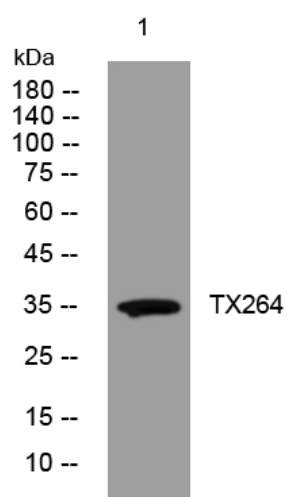


# TX264 rabbit pAb

<b>Catalog No</b>	YP-Ab-11573
<b>Isotype</b>	IgG
<b>Reactivity</b>	Human;Rat;Mouse;
<b>Applications</b>	WB
<b>Gene Name</b>	TEX264 ZSIG11 UNQ337/PRO536
<b>Protein Name</b>	TX264
<b>Immunogen</b>	Synthesized peptide derived from human TX264 AA range: 112-162
<b>Specificity</b>	This antibody detects endogenous levels of TX264 at Human
<b>Formulation</b>	Liquid in PBS containing 50% glycerol, 0.5% BSA and 0.02% sodium azide.
<b>Source</b>	Polyclonal, Rabbit,IgG
<b>Purification</b>	The antibody was affinity-purified from rabbit serum by affinity-chromatography using specific immunogen.
<b>Dilution</b>	WB 1: 500-2000
<b>Concentration</b>	1 mg/ml
<b>Purity</b>	≥90%
<b>Storage Stability</b>	-20°C/1 year
<b>Synonyms</b>	
<b>Observed Band</b>	
<b>Cell Pathway</b>	Endoplasmic reticulum membrane ; Single-pass type III membrane protein . Cytoplasmic vesicle, autophagosome . Cytoplasm, cytosol . Nucleus . Chromosome . Is trafficked from tubular ER to growing autophagosomes via its cytosolic LIR motif (PubMed:31006537). Also found in the cytosol, nucleus and chromatin (PubMed:32152270). In response to formation of covalent DNA-protein cross-links (DPCs), localizes to the nuclear periphery, and associates with DNA replication forks (PubMed:32152270). .
<b>Tissue Specificity</b>	
<b>Function</b>	
<b>Background</b>	
<b>matters needing attention</b>	Avoid repeated freezing and thawing!

**Usage suggestions**

This product can be used in immunological reaction related experiments. For more information, please consult technical personnel.

**Products Images**

Western blot analysis of lysates from VEC cells,  
primary antibody was diluted at 1:1000, 4° over night