

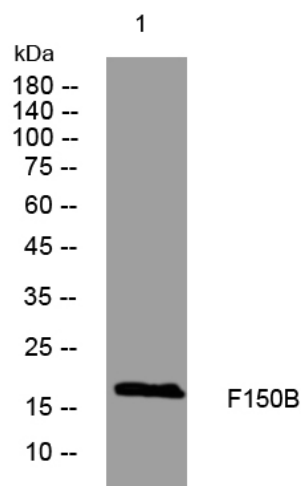


F150B rabbit pAb

Catalog No	YP-Ab-11560
Isotype	IgG
Reactivity	Human; Mouse; Rat
Applications	WB
Gene Name	FAM150B UNQ542/PRO1097
Protein Name	F150B
Immunogen	Synthesized peptide derived from human F150B AA range: 64-114
Specificity	This antibody detects endogenous levels of F150B at Human/Mouse/Rat
Formulation	Liquid in PBS containing 50% glycerol, 0.5% BSA and 0.02% sodium azide.
Source	Polyclonal, Rabbit, IgG
Purification	The antibody was affinity-purified from rabbit serum by affinity-chromatography using specific immunogen.
Dilution	WB 1: 500-2000
Concentration	1 mg/ml
Purity	≥90%
Storage Stability	-20°C/1 year
Synonyms	
Observed Band	
Cell Pathway	Secreted . Cell membrane . Following interaction with receptor tyrosine kinase ALK, associates with the cell membrane, membrane-binding is required to activate ALK. .
Tissue Specificity	Widely expressed with highest levels in adrenal gland and modest levels in pancreas, testis and uterus.
Function	similarity: Belongs to the FAM150 family.,
Background	
matters needing attention	Avoid repeated freezing and thawing!
Usage suggestions	This product can be used in immunological reaction related experiments. For more information, please consult technical personnel.



Products Images



Western blot analysis of lysates from HEK293 cells,
primary antibody was diluted at 1:1000, 4° over night