



PO2F3 rabbit pAb

Catalog No	YP-Ab-11552
Isotype	IgG
Reactivity	Human; Mouse; Rat
Applications	WB; IHC
Gene Name	POU2F3 OTF11 PLA1
Protein Name	PO2F3
Immunogen	Synthesized peptide derived from human PO2F3 AA range: 240-290
Specificity	This antibody detects endogenous levels of PO2F3 at Human/Mouse/Rat
Formulation	Liquid in PBS containing 50% glycerol, 0.5% BSA and 0.02% sodium azide.
Source	Polyclonal, Rabbit, IgG
Purification	The antibody was affinity-purified from rabbit serum by affinity-chromatography using specific immunogen.
Dilution	WB 1:500-2000; IHC-p 1:50-300
Concentration	1 mg/ml
Purity	≥90%
Storage Stability	-20°C/1 year
Synonyms	
Observed Band	
Cell Pathway	Nucleus.
Tissue Specificity	Specifically expressed in epidermis and cultured keratinocytes.
Function	function: Transcription factor that binds to the octamer motif (5'-ATTTGCAT-3'). Regulated the expression of a number of genes such as SPRR2A or placental lactogen., similarity: Belongs to the POU transcription factor family. Class-2 subfamily., similarity: Contains 1 homeobox DNA-binding domain., similarity: Contains 1 POU-specific domain., tissue specificity: Specifically expressed in epidermis and cultured keratinocytes.,
Background	This gene encodes a member of the POU domain family of transcription factors. POU domain transcription factors bind to a specific octamer DNA motif and regulate cell type-specific differentiation pathways. The encoded protein is primarily expressed in the epidermis, and plays a critical role in keratinocyte proliferation and differentiation. The encoded protein is also a candidate tumor suppressor protein, and aberrant promoter methylation of this gene may play a role in cervical cancer. Alternatively spliced transcript variants encoding multiple isoforms have been observed for this gene. [provided by RefSeq, Sep 2011],



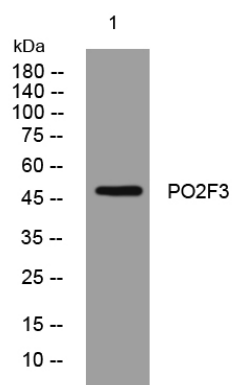
matters needing attention

Avoid repeated freezing and thawing!

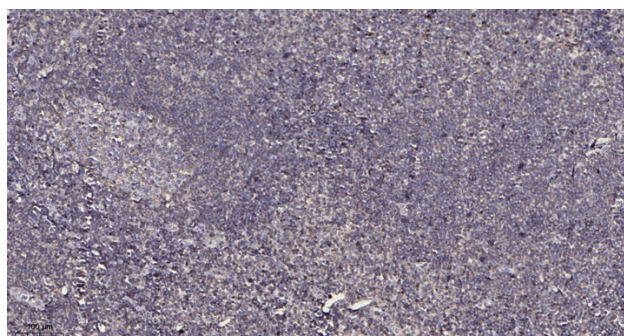
Usage suggestions

This product can be used in immunological reaction related experiments. For more information, please consult technical personnel.

Products Images



Western blot analysis of lysates from VEC cells, primary antibody was diluted at 1:1000, 4° over night



Immunohistochemical analysis of paraffin-embedded human tonsil. 1, Antibody was diluted at 1:200(4° overnight). 2, Tris-EDTA, pH9.0 was used for antigen retrieval. 3, Secondary antibody was diluted at 1:200(room temperature, 45min).