

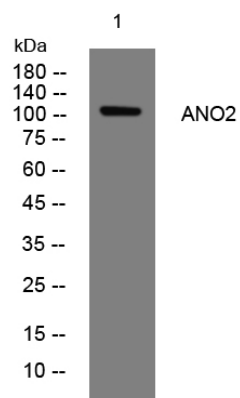


ANO2 rabbit pAb

Catalog No	YP-Ab-11542
Isotype	IgG
Reactivity	Human; Mouse
Applications	WB
Gene Name	ANO2 C12orf3 TMEM16B
Protein Name	ANO2
Immunogen	Synthesized peptide derived from human ANO2 AA range: 362-412
Specificity	This antibody detects endogenous levels of ANO2 at Human/Mouse
Formulation	Liquid in PBS containing 50% glycerol, 0.5% BSA and 0.02% sodium azide.
Source	Polyclonal, Rabbit,IgG
Purification	The antibody was affinity-purified from rabbit serum by affinity-chromatography using specific immunogen.
Dilution	WB 1: 500-2000
Concentration	1 mg/ml
Purity	≥90%
Storage Stability	-20°C/1 year
Synonyms	
Observed Band	
Cell Pathway	Cell membrane ; Multi-pass membrane protein .
Tissue Specificity	Retina, especially in the photoreceptor synaptic terminals.
Function	function:May act as a calcium-activated chloride channel.,similarity:Belongs to the anoctamin family.,
Background	ANO2 belongs to a family of calcium-activated chloride channels (CaCCs) (reviewed by Hartzell et al., 2009 [PubMed 19015192]).[supplied by OMIM, Jan 2011],
matters needing attention	Avoid repeated freezing and thawing!
Usage suggestions	This product can be used in immunological reaction related experiments. For more information, please consult technical personnel.



Products Images



Western blot analysis of lysates from KB cells, primary antibody was diluted at 1:1000, 4° over night