

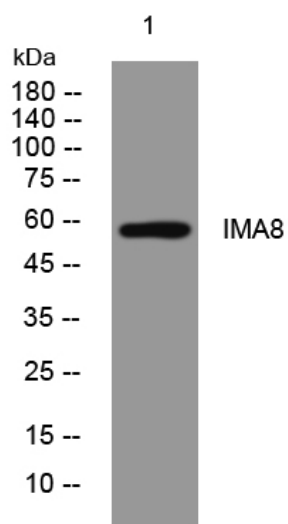


# IMA8 rabbit pAb

<b>Catalog No</b>	YP-Ab-11535
<b>Isotype</b>	IgG
<b>Reactivity</b>	Human; Mouse
<b>Applications</b>	WB
<b>Gene Name</b>	KPNA7
<b>Protein Name</b>	IMA8
<b>Immunogen</b>	Synthesized peptide derived from human IMA8 AA range: 313-363
<b>Specificity</b>	This antibody detects endogenous levels of IMA8 at Human/Mouse
<b>Formulation</b>	Liquid in PBS containing 50% glycerol, 0.5% BSA and 0.02% sodium azide.
<b>Source</b>	Polyclonal, Rabbit,IgG
<b>Purification</b>	The antibody was affinity-purified from rabbit serum by affinity-chromatography using specific immunogen.
<b>Dilution</b>	WB 1: 500-2000
<b>Concentration</b>	1 mg/ml
<b>Purity</b>	≥90%
<b>Storage Stability</b>	-20°C/1 year
<b>Synonyms</b>	
<b>Observed Band</b>	
<b>Cell Pathway</b>	Nucleus .
<b>Tissue Specificity</b>	
<b>Function</b>	function:Functions in nuclear protein import.,similarity:Belongs to the importin alpha family.,similarity:Contains 1 IBB domain.,similarity:Contains 8 ARM repeats.,
<b>Background</b>	The transport of molecules between the nucleus and the cytoplasm in eukaryotic cells is mediated by the nuclear pore complex (NPC), which consists of 60-100 proteins. Small molecules (up to 70 kD) can pass through the nuclear pore by nonselective diffusion while larger molecules are transported by an active process. The protein encoded by this gene belongs to the importin alpha family, and is involved in nuclear protein import, but exhibits different nuclear localization signal binding specificity compared to other members of the family. A pseudogene of this gene has been defined on chromosome 5. [provided by RefSeq, Jul 2016],
<b>matters needing attention</b>	Avoid repeated freezing and thawing!

**Usage suggestions**

This product can be used in immunological reaction related experiments. For more information, please consult technical personnel.

**Products Images**

Western blot analysis of lysates from MCF-7 cells,  
primary antibody was diluted at 1:1000, 4° over night