

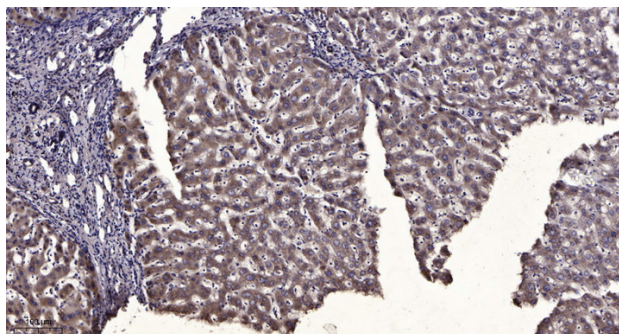


CF057 rabbit pAb

| | |
|----------------------------------|---|
| Catalog No | YP-Ab-11534 |
| Isotype | IgG |
| Reactivity | Human; Mouse |
| Applications | IHC;IF |
| Gene Name | C6orf57 |
| Protein Name | CF057 |
| Immunogen | Synthesized peptide derived from human CF057 AA range: 23-73 |
| Specificity | This antibody detects endogenous levels of CF057 at Human/Mouse |
| Formulation | Liquid in PBS containing 50% glycerol, 0.5% BSA and 0.02% sodium azide. |
| Source | Polyclonal, Rabbit,IgG |
| Purification | The antibody was affinity-purified from rabbit serum by affinity-chromatography using specific immunogen. |
| Dilution | IHC-p 1: 50-200. IF 1:50-200 |
| Concentration | 1 mg/ml |
| Purity | ≥90% |
| Storage Stability | -20°C/1 year |
| Synonyms | |
| Observed Band | |
| Cell Pathway | Mitochondrion matrix . |
| Tissue Specificity | |
| Function | similarity:Belongs to the UPF0369 family., |
| Background | |
| matters needing attention | Avoid repeated freezing and thawing! |
| Usage suggestions | This product can be used in immunological reaction related experiments. For more information, please consult technical personnel. |



Products Images



Immunohistochemical analysis of paraffin-embedded human liver cancer. 1, Antibody was diluted at 1:200(4° overnight). 2, Tris-EDTA,pH9.0 was used for antigen retrieval. 3,Secondary antibody was diluted at 1:200(room temperature, 45min).