

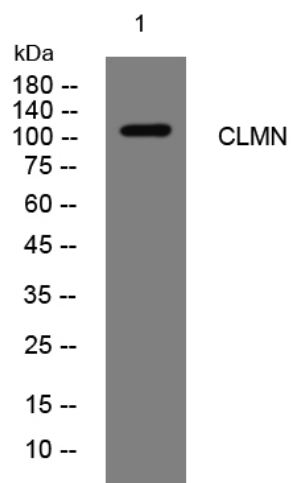


CLMN rabbit pAb

Catalog No	YP-Ab-11533
Isotype	IgG
Reactivity	Human; Mouse
Applications	WB
Gene Name	CLMN KIAA1188
Protein Name	CLMN
Immunogen	Synthesized peptide derived from human CLMN AA range: 693-743
Specificity	This antibody detects endogenous levels of CLMN at Human/Mouse
Formulation	Liquid in PBS containing 50% glycerol, 0.5% BSA and 0.02% sodium azide.
Source	Polyclonal, Rabbit,IgG
Purification	The antibody was affinity-purified from rabbit serum by affinity-chromatography using specific immunogen.
Dilution	WB 1: 500-2000
Concentration	1 mg/ml
Purity	≥90%
Storage Stability	-20°C/1 year
Synonyms	
Observed Band	
Cell Pathway	Membrane ; Single-pass type IV membrane protein .
Tissue Specificity	Widely expressed at intermediate level.
Function	sequence caution:Chimeric cDNA.,similarity:Contains 1 actin-binding domain.,similarity:Contains 2 CH (calponin-homology) domains.,tissue specificity:Widely expressed at intermediate level.,
Background	
matters needing attention	Avoid repeated freezing and thawing!
Usage suggestions	This product can be used in immunological reaction related experiments. For more information, please consult technical personnel.



Products Images



Western blot analysis of lysates from 293T cells,
primary antibody was diluted at 1:1000, 4° over night