



# UBA3 rabbit pAb

<b>Catalog No</b>	YP-Ab-11531
<b>Isotype</b>	IgG
<b>Reactivity</b>	Human; Mouse; Rat
<b>Applications</b>	WB
<b>Gene Name</b>	UBA3 UBE1C
<b>Protein Name</b>	UBA3
<b>Immunogen</b>	Synthesized peptide derived from human UBA3 AA range: 105-155
<b>Specificity</b>	This antibody detects endogenous levels of UBA3 at Human/Mouse/Rat
<b>Formulation</b>	Liquid in PBS containing 50% glycerol, 0.5% BSA and 0.02% sodium azide.
<b>Source</b>	Polyclonal, Rabbit, IgG
<b>Purification</b>	The antibody was affinity-purified from rabbit serum by affinity-chromatography using specific immunogen.
<b>Dilution</b>	WB 1: 500-2000
<b>Concentration</b>	1 mg/ml
<b>Purity</b>	≥90%
<b>Storage Stability</b>	-20°C/1 year
<b>Synonyms</b>	
<b>Observed Band</b>	
<b>Cell Pathway</b>	nucleus, cytosol,
<b>Tissue Specificity</b>	Ubiquitously expressed.
<b>Function</b>	enzyme regulation: Binding of TP53BP2 to the regulatory subunit NAE1 decreases activity., function: Catalytic subunit of the dimeric UBA3-NAE1 E1 enzyme. E1 activates NEDD8 by first adenylating its C-terminal glycine residue with ATP, thereafter linking this residue to the side chain of the catalytic cysteine, yielding a NEDD8-UBA3 thioester and free AMP. E1 finally transfers NEDD8 to the catalytic cysteine of UBE2M. Down-regulates steroid receptor activity. Necessary for cell cycle progression., miscellaneous: Arg-211 acts as a selectivity gate, preventing misactivation of ubiquitin by this NEDD8-specific E1 complex., pathway: Protein modification; protein neddylation., similarity: Belongs to the ubiquitin-activating E1 family. UBA3 subfamily., subunit: Heterodimer of UBA3 and NAE1. Interacts with NEDD8, UBE2F and UBE2M. Binds ESR1 and ESR2 with bound steroid ligand., tissue specificity: Ubiquitous
<b>Background</b>	The modification of proteins with ubiquitin is an important cellular mechanism for targeting abnormal or short-lived proteins for degradation. Ubiquitination involves at least three classes of enzymes: ubiquitin-activating enzymes, or E1s,



ubiquitin-conjugating enzymes, or E2s, and ubiquitin-protein ligases, or E3s. This gene encodes a member of the E1 ubiquitin-activating enzyme family. The encoded enzyme associates with AppBp1, an amyloid beta precursor protein binding protein, to form a heterodimer, and then the enzyme complex activates NEDD8, a ubiquitin-like protein, which regulates cell division, signaling and embryogenesis. Multiple alternatively spliced transcript variants encoding distinct isoforms have been found for this gene. [provided by RefSeq, Jul 2008],

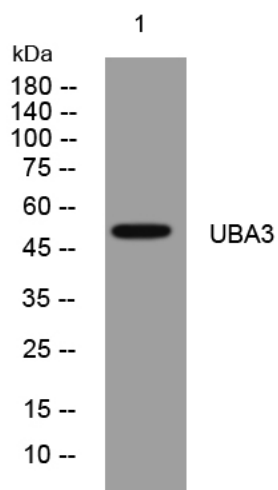
#### matters needing attention

Avoid repeated freezing and thawing!

#### Usage suggestions

This product can be used in immunological reaction related experiments. For more information, please consult technical personnel.

### Products Images



Western blot analysis of lysates from A431 cells, primary antibody was diluted at 1:1000, 4° over night