

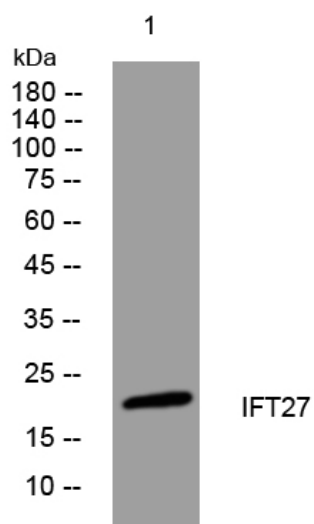


IFT27 rabbit pAb

Catalog No	YP-Ab-11526
Isotype	IgG
Reactivity	Human; Mouse
Applications	WB
Gene Name	IFT27 RABL4 RAYL
Protein Name	IFT27
Immunogen	Synthesized peptide derived from human IFT27 AA range: 8-58
Specificity	This antibody detects endogenous levels of IFT27 at Human/Mouse
Formulation	Liquid in PBS containing 50% glycerol, 0.5% BSA and 0.02% sodium azide.
Source	Polyclonal, Rabbit,IgG
Purification	The antibody was affinity-purified from rabbit serum by affinity-chromatography using specific immunogen.
Dilution	WB 1: 500-2000
Concentration	1 mg/ml
Purity	≥90%
Storage Stability	-20°C/1 year
Synonyms	
Observed Band	
Cell Pathway	Cell projection, cilium . Cytoplasm . Cell projection, cilium, flagellum . Localizes to the sperm flagellum. .
Tissue Specificity	
Function	function:Possesses GTPase activity.,similarity:Belongs to the small GTPase superfamily. Ras family.,
Background	This gene encodes a GTP-binding protein that is a core component of the intraflagellar transport complex B. Characterization of the similar Chlamydomonas protein indicates a function in cell cycle control. Alternative splicing of this gene results in multiple transcript variants. [provided by RefSeq, Jan 2012],
matters needing attention	Avoid repeated freezing and thawing!
Usage suggestions	This product can be used in immunological reaction related experiments. For more information, please consult technical personnel.



Products Images



Western blot analysis of lysates from 293T cells,
primary antibody was diluted at 1:1000, 4° over night