

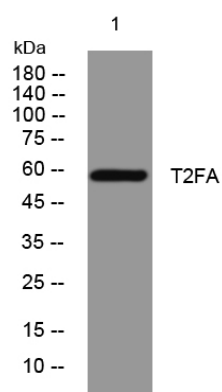


# T2FA rabbit pAb

<b>Catalog No</b>	YP-Ab-11525
<b>Isotype</b>	IgG
<b>Reactivity</b>	Human; Mouse; Rat
<b>Applications</b>	WB
<b>Gene Name</b>	GTF2F1 RAP74
<b>Protein Name</b>	T2FA
<b>Immunogen</b>	Synthesized peptide derived from human T2FA AA range: 462-512
<b>Specificity</b>	This antibody detects endogenous levels of T2FA at Human/Mouse/Rat
<b>Formulation</b>	Liquid in PBS containing 50% glycerol, 0.5% BSA and 0.02% sodium azide.
<b>Source</b>	Polyclonal, Rabbit, IgG
<b>Purification</b>	The antibody was affinity-purified from rabbit serum by affinity-chromatography using specific immunogen.
<b>Dilution</b>	WB 1: 500-2000
<b>Concentration</b>	1 mg/ml
<b>Purity</b>	≥90%
<b>Storage Stability</b>	-20°C/1 year
<b>Synonyms</b>	
<b>Observed Band</b>	
<b>Cell Pathway</b>	Nucleus.
<b>Tissue Specificity</b>	
<b>Function</b>	caution: Was reported (PubMed:10428810) to have a protein kinase activity and to autophosphorylates on Ser-385 and Thr-389. function: TFIIF is a general transcription initiation factor that binds to RNA polymerase II and helps to recruit it to the initiation complex in collaboration with TFIIB. It promotes transcription elongation. PTM: Phosphorylated on Ser and other residues by TAF1 and casein kinase II-like kinases. similarity: Belongs to the TFIIF alpha subunit family. subunit: Heterodimer of an alpha and a beta subunit. Interacts with GTF2F2 and CTDP1. Interacts with TAF6/TAFII80.
<b>Background</b>	
<b>matters needing attention</b>	Avoid repeated freezing and thawing!

**Usage suggestions**

This product can be used in immunological reaction related experiments. For more information, please consult technical personnel.

**Products Images**

Western blot analysis of lysates from HpeG2 cells, primary antibody was diluted at 1:1000, 4° over night