



# EGFL6 rabbit pAb

<b>Catalog No</b>	YP-Ab-11517
<b>Isotype</b>	IgG
<b>Reactivity</b>	Human; Mouse
<b>Applications</b>	WB
<b>Gene Name</b>	EGFL6 MAEG PP648 UNQ281/PRO320
<b>Protein Name</b>	EGFL6
<b>Immunogen</b>	Synthesized peptide derived from human EGFL6 AA range: 144-194
<b>Specificity</b>	This antibody detects endogenous levels of EGFL6 at Human/Mouse
<b>Formulation</b>	Liquid in PBS containing 50% glycerol, 0.5% BSA and 0.02% sodium azide.
<b>Source</b>	Polyclonal, Rabbit,IgG
<b>Purification</b>	The antibody was affinity-purified from rabbit serum by affinity-chromatography using specific immunogen.
<b>Dilution</b>	WB 1: 500-2000
<b>Concentration</b>	1 mg/ml
<b>Purity</b>	≥90%
<b>Storage Stability</b>	-20°C/1 year
<b>Synonyms</b>	
<b>Observed Band</b>	
<b>Cell Pathway</b>	Secreted, extracellular space, extracellular matrix, basement membrane .
<b>Tissue Specificity</b>	
<b>Function</b>	developmental stage:Only detected in fetal tissues.,function:May bind integrin alpha-8/beta-1 and play a role in hair follicle morphogenesis. Promotes matrix assembly.,similarity:Belongs to the nephronectin family.,similarity:Contains 1 MAM domain.,similarity:Contains 5 EGF-like domains.,
<b>Background</b>	This gene encodes a member of the epidermal growth factor (EGF) repeat superfamily. Members of this superfamily are characterized by the presence of EGF-like repeats and are often involved in the regulation of cell cycle, proliferation, and developmental processes. The gene product contains a signal peptide, suggesting that it is secreted; an EGF repeat region consisting of 4 complete EGF-like repeats and 1 partial EGF-like repeat, 3 of which have a calcium-binding consensus sequence; an arg-gly-asp integrin association motif; and a MAM domain, which is believed to have an adhesive function. This gene is expressed early during development, and its expression has been detected in lung and meningioma tumors. [provided by RefSeq, Jul 2008],

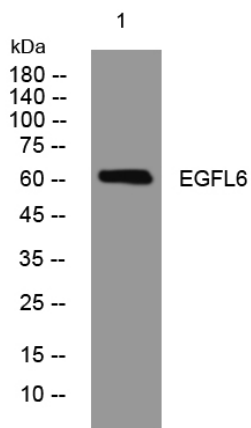
**matters needing attention**

Avoid repeated freezing and thawing!

**Usage suggestions**

This product can be used in immunological reaction related experiments. For more information, please consult technical personnel.

## Products Images



Western blot analysis of lysates from DU145 cells, primary antibody was diluted at 1:1000, 4° over night