

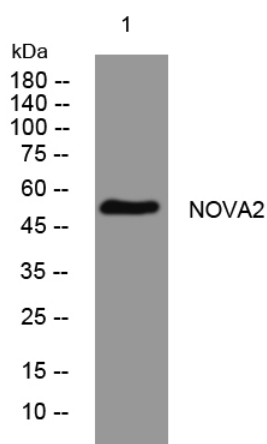


# NOVA2 rabbit pAb

<b>Catalog No</b>	YP-Ab-11514
<b>Isotype</b>	IgG
<b>Reactivity</b>	Human;Rat;Mouse;
<b>Applications</b>	WB
<b>Gene Name</b>	NOVA2 ANOVA NOVA3
<b>Protein Name</b>	NOVA2
<b>Immunogen</b>	Synthesized peptide derived from human NOVA2 AA range: 274-324
<b>Specificity</b>	This antibody detects endogenous levels of NOVA2 at Human
<b>Formulation</b>	Liquid in PBS containing 50% glycerol, 0.5% BSA and 0.02% sodium azide.
<b>Source</b>	Polyclonal, Rabbit,IgG
<b>Purification</b>	The antibody was affinity-purified from rabbit serum by affinity-chromatography using specific immunogen.
<b>Dilution</b>	WB 1: 500-2000
<b>Concentration</b>	1 mg/ml
<b>Purity</b>	≥90%
<b>Storage Stability</b>	-20°C/1 year
<b>Synonyms</b>	
<b>Observed Band</b>	
<b>Cell Pathway</b>	Nucleus .
<b>Tissue Specificity</b>	Brain. Expression restricted to astrocytes.
<b>Function</b>	disease:Autoantigen in the paraneoplastic opsoclonus myoclonus ataxia (POMA), a paraneoplastic neurological syndrome/disorder (PNS/D) associated with breast cancer, fallopian cancer, and SCLCa and characterized primarily by loss of inhibitory control of motor neurons in the spinal cord and brainstem. Recognized by the IgG autoantibody ANNA-2 (also called anti-Ri).,domain:The third KH domain (KH3) recognizes specifically 5'-UCAAY-3'.function:May regulate RNA splicing or metabolism in a specific subset of developing neurons (By similarity). Binds single strand RNA.,similarity:Contains 3 KH domains.,subunit:Interacts with PTBP2.,tissue specificity:Brain. Expression restricted to astrocytes.,
<b>Background</b>	
<b>matters needing attention</b>	Avoid repeated freezing and thawing!

**Usage suggestions**

This product can be used in immunological reaction related experiments. For more information, please consult technical personnel.

**Products Images**

Western blot analysis of lysates from HeLa cells,  
primary antibody was diluted at 1:1000, 4° over night