

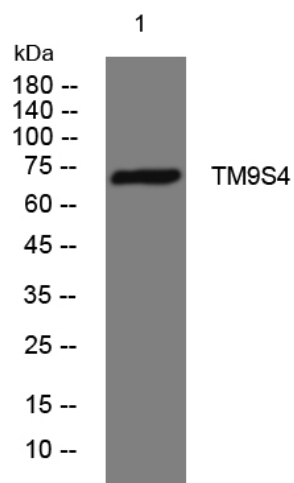


TM9S4 rabbit pAb

| | |
|----------------------------------|---|
| Catalog No | YP-Ab-11512 |
| Isotype | IgG |
| Reactivity | Human; Mouse; Rat |
| Applications | WB |
| Gene Name | TM9SF4 KIAA0255 |
| Protein Name | TM9S4 |
| Immunogen | Synthesized peptide derived from human TM9S4 AA range: 315-365 |
| Specificity | This antibody detects endogenous levels of TM9S4 at Human/Mouse/Rat |
| Formulation | Liquid in PBS containing 50% glycerol, 0.5% BSA and 0.02% sodium azide. |
| Source | Polyclonal, Rabbit, IgG |
| Purification | The antibody was affinity-purified from rabbit serum by affinity-chromatography using specific immunogen. |
| Dilution | WB 1: 500-2000 |
| Concentration | 1 mg/ml |
| Purity | ≥90% |
| Storage Stability | -20°C/1 year |
| Synonyms | |
| Observed Band | |
| Cell Pathway | Membrane ; Multi-pass membrane protein . Golgi apparatus . Early endosome . |
| Tissue Specificity | Highly expressed in metastatic melanoma cells whereas it is undetectable in primary melanoma cells, healthy skin tissues and peripheral blood lymphocytes. Expressed in CD34(+) hematopoietic progenitor cells and during monocyte and granulocyte differentiation. Overexpressed in acute myeloid leukemia, in particular in those displaying granulocytic differentiation (at protein level). |
| Function | similarity: Belongs to the nonaspanin (TM9SF) family., |
| Background | |
| matters needing attention | Avoid repeated freezing and thawing! |
| Usage suggestions | This product can be used in immunological reaction related experiments. For more information, please consult technical personnel. |



Products Images



Western blot analysis of lysates from HuvEc cells,
primary antibody was diluted at 1:1000, 4°over night