



PLP2 rabbit pAb

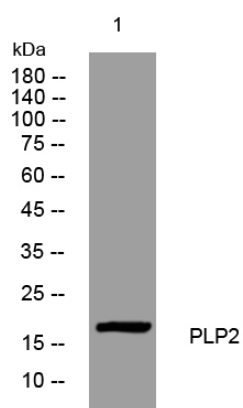
Catalog No	YP-Ab-11498
Isotype	IgG
Reactivity	Human; Mouse; Rat
Applications	WB; ELISA; IHC
Gene Name	PLP2 A4
Protein Name	PLP2
Immunogen	Synthesized peptide derived from human PLP2 AA range: 56-106
Specificity	This antibody detects endogenous levels of PLP2 at Human/Mouse/Rat
Formulation	Liquid in PBS containing 50% glycerol, 0.5% BSA and 0.02% sodium azide.
Source	Polyclonal, Rabbit, IgG
Purification	The antibody was affinity-purified from rabbit serum by affinity-chromatography using specific immunogen.
Dilution	WB 1:500-2000; IHC-p 1:50-300; ELISA 2000-20000
Concentration	1 mg/ml
Purity	≥90%
Storage Stability	-20°C/1 year
Synonyms	
Observed Band	
Cell Pathway	Membrane; Multi-pass membrane protein.
Tissue Specificity	Enriched in colonic mucosa. The expression of A4 follows a gradient along the crypto-villus axis with the most abundant message occurring in the lower half of the crypt.
Function	function: May play a role in cell differentiation in the intestinal epithelium.; similarity: Contains 1 MARVEL domain.; tissue specificity: Enriched in colonic mucosa. The expression of A4 follows a gradient along the crypto-villus axis with the most abundant message occurring in the lower half of the crypt.,
Background	This gene encodes an integral membrane protein that localizes to the endoplasmic reticulum in colonic epithelial cells. The encoded protein can multimerize and may function as an ion channel. A polymorphism in the promoter of this gene may be linked to an increased risk of X-linked mental retardation. A pseudogene of this gene is found on chromosome 5. [provided by RefSeq, Jan 2010],
matters needing attention	Avoid repeated freezing and thawing!



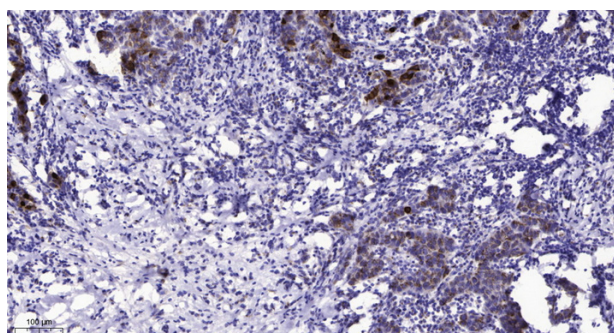
Usage suggestions

This product can be used in immunological reaction related experiments. For more information, please consult technical personnel.

Products Images



Western blot analysis of lysates from KB cells, primary antibody was diluted at 1:1000, 4° over night



Immunohistochemical analysis of paraffin-embedded human Breast cancer. 1, Antibody was diluted at 1:200(4° overnight). 2, Tris-EDTA, pH9.0 was used for antigen retrieval. 3, Secondary antibody was diluted at 1:200(room temperature, 45min).