



FRPD2 rabbit pAb

Catalog No	YP-Ab-11495
Isotype	IgG
Reactivity	Human;Rat;Mouse;
Applications	WB
Gene Name	FRMPD2 PDZD5C PDZK4 PDZK5C
Protein Name	FRPD2
Immunogen	Synthesized peptide derived from human FRPD2 AA range: 1161-1211
Specificity	This antibody detects endogenous levels of FRPD2 at Human
Formulation	Liquid in PBS containing 50% glycerol, 0.5% BSA and 0.02% sodium azide.
Source	Polyclonal, Rabbit,IgG
Purification	The antibody was affinity-purified from rabbit serum by affinity-chromatography using specific immunogen.
Dilution	WB 1: 500-2000
Concentration	1 mg/ml
Purity	≥90%
Storage Stability	-20°C/1 year
Synonyms	
Observed Band	
Cell Pathway	Cytoplasm . Basolateral cell membrane . Cell junction, tight junction . Colocalizes with CTNNB1, CDH1 and PKP4 at the basolateral membrane. Colocalizes with TJP1 at tight junctions. Its recruitment to cell-cell contacts requires CDH1.
Tissue Specificity	Expressed in epithelial cells.
Function	caution:Could be the product of a pseudogene. This is the product of related genes or pseudogenes located in a region of chromosome 10q which contains a segmental duplication resulting in three nearly identical regions.,similarity:Contains 1 FERM domain.,similarity:Contains 1 KIND domain.,similarity:Contains 1 PDZ (DHR) domain.,similarity:Contains 2 PDZ (DHR) domains.,similarity:Contains 3 PDZ (DHR) domains.,
Background	This gene encodes a peripheral membrane protein and is located in a region of chromosome 10q that contains a segmental duplication. This copy of the gene is full-length and is in the telomeric duplicated region. Two other more centromerically proximal copies of the gene are partial and may represent pseudogenes. This full-length gene appears to function in the establishment and maintenance of cell polarization. The protein is recruited to cell-cell junctions in an E-cadherin-dependent manner, and is selectively localized at the basolateral membrane in polarized epithelial cells. Alternative splicing results in multiple

transcript variants. [provided by RefSeq, Dec 2009],

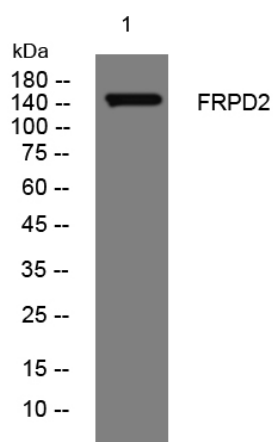
matters needing attention

Avoid repeated freezing and thawing!

Usage suggestions

This product can be used in immunological reaction related experiments. For more information, please consult technical personnel.

Products Images



Western blot analysis of lysates from THP-1 cells,
primary antibody was diluted at 1:1000, 4°over night