

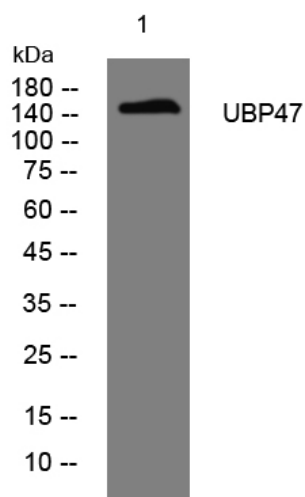


# UBP47 rabbit pAb

|                                  |  |
|----------------------------------|--|
| <b>Catalog No</b>                | YP-Ab-11486  |
| <b>Isotype</b>                   | IgG  |
| <b>Reactivity</b>                | Human; Mouse   |
| <b>Applications</b>              | WB   |
| <b>Gene Name</b>                 | USP47  |
| <b>Protein Name</b>              | UBP47  |
| <b>Immunogen</b>                 | Synthesized peptide derived from human UB47 AA range: 302-352  |
| <b>Specificity</b>               | This antibody detects endogenous levels of UB47 at Human/Mouse   |
| <b>Formulation</b>               | Liquid in PBS containing 50% glycerol, 0.5% BSA and 0.02% sodium azide.  |
| <b>Source</b>                    | Polyclonal, Rabbit,IgG   |
| <b>Purification</b>              | The antibody was affinity-purified from rabbit serum by affinity-chromatography using specific immunogen.  |
| <b>Dilution</b>                  | WB 1: 500-2000   |
| <b>Concentration</b>             | 1 mg/ml  |
| <b>Purity</b>                    | ≥90%   |
| <b>Storage Stability</b>         | -20°C/1 year   |
| <b>Synonyms</b>                  |  |
| <b>Observed Band</b>             |  |
| <b>Cell Pathway</b>              | Cytoplasm .  |
| <b>Tissue Specificity</b>        | Expressed in skeletal muscle, heart and testis.  |
| <b>Function</b>                  | catalytic activity:Ubiquitin C-terminal thioester + H(2)O = ubiquitin + a thiol.,function:May be catalytically inactive although it seems to have kept all necessary active site residues.,similarity:Belongs to the peptidase C19 family.,tissue specificity:Expressed in skeletal muscle, heart and testis., |
| <b>Background</b>                |  |
| <b>matters needing attention</b> | Avoid repeated freezing and thawing!   |
| <b>Usage suggestions</b>         | This product can be used in immunological reaction related experiments. For more information, please consult technical personnel.  |



## Products Images



Western blot analysis of lysates from DU145 cells,  
primary antibody was diluted at 1:1000, 4°over night