

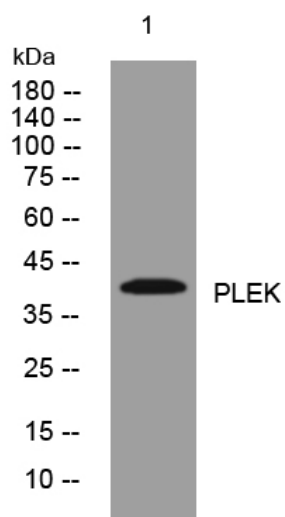


PLEK rabbit pAb

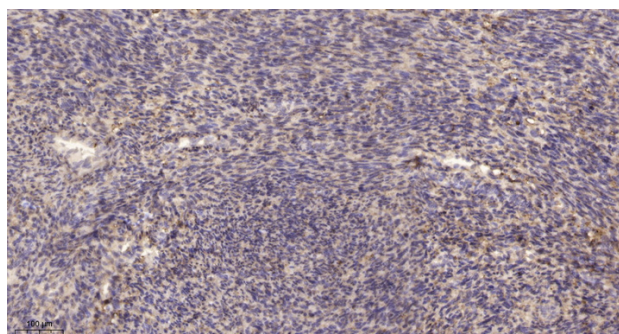
Catalog No	YP-Ab-11483
Isotype	IgG
Reactivity	Human; Mouse; Rat
Applications	WB; ELISA; IHC
Gene Name	PLEK P47
Protein Name	PLEK
Immunogen	Synthesized peptide derived from human PLEK AA range: 99-149
Specificity	This antibody detects endogenous levels of PLEK at Human/Mouse/Rat
Formulation	Liquid in PBS containing 50% glycerol, 0.5% BSA and 0.02% sodium azide.
Source	Polyclonal, Rabbit, IgG
Purification	The antibody was affinity-purified from rabbit serum by affinity-chromatography using specific immunogen.
Dilution	WB 1:500-2000; IHC-p 1:50-300; ELISA 2000-20000
Concentration	1 mg/ml
Purity	≥90%
Storage Stability	-20°C/1 year
Synonyms	
Observed Band	
Cell Pathway	extracellular region, cytoplasm, cytosol, membrane, ruffle membrane,
Tissue Specificity	
Function	function: Major protein kinase C substrate of platelets, its exact function is not known., similarity: Contains 1 DEP domain., similarity: Contains 2 PH domains.,
Background	
matters needing attention	Avoid repeated freezing and thawing!
Usage suggestions	This product can be used in immunological reaction related experiments. For more information, please consult technical personnel.



Products Images



Western blot analysis of lysates from A549 cells, primary antibody was diluted at 1:1000, 4° over night



Immunohistochemical analysis of paraffin-embedded human uterus. 1, Antibody was diluted at 1:200(4° overnight). 2, Tris-EDTA, pH9.0 was used for antigen retrieval. 3, Secondary antibody was diluted at 1:200(room temperature, 45min).