

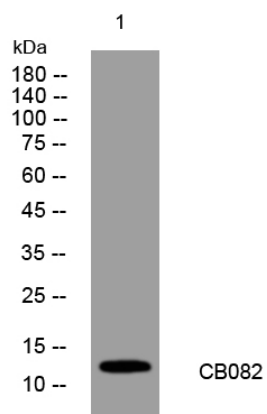


CB082 rabbit pAb

Catalog No	YP-Ab-11478
Isotype	IgG
Reactivity	Human; Mouse
Applications	WB
Gene Name	C2orf82 UNQ830/PRO1757
Protein Name	CB082
Immunogen	Synthesized peptide derived from human CB082 AA range: 68-118
Specificity	This antibody detects endogenous levels of CB082 at Human/Mouse
Formulation	Liquid in PBS containing 50% glycerol, 0.5% BSA and 0.02% sodium azide.
Source	Polyclonal, Rabbit,IgG
Purification	The antibody was affinity-purified from rabbit serum by affinity-chromatography using specific immunogen.
Dilution	WB 1: 500-2000
Concentration	1 mg/ml
Purity	≥90%
Storage Stability	-20°C/1 year
Synonyms	
Observed Band	
Cell Pathway	Membrane ; Single-pass membrane protein . Cytoplasm . Secreted, extracellular space, extracellular matrix . Appears as reticular-like structures throughout the cytoplasm and adjacent to the plasma membrane. In proliferation and hypertrophic chondrocytes, detected intracellularly and in the pericellular extracellular matrix. In primary spongiosa, detected only in the extracellular matrix. .
Tissue Specificity	Expressed in cartilage.
Function	
Background	
matters needing attention	Avoid repeated freezing and thawing!
Usage suggestions	This product can be used in immunological reaction related experiments. For more information, please consult technical personnel.



Products Images



Western blot analysis of lysates from 293T cells,
primary antibody was diluted at 1:1000, 4° over night