

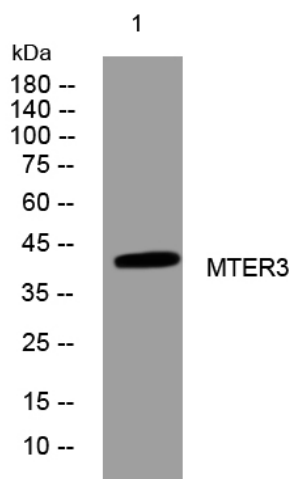


MTER3 rabbit pAb

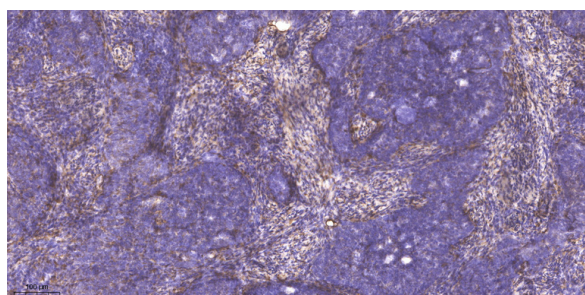
Catalog No	YP-Ab-11450
Isotype	IgG
Reactivity	Human; Mouse; Rat
Applications	WB; ELISA; IHC
Gene Name	MTERFD3
Protein Name	MTER3
Immunogen	Synthesized peptide derived from human MTER3 AA range: 238-288
Specificity	This antibody detects endogenous levels of MTER3 at Human/Mouse/Rat
Formulation	Liquid in PBS containing 50% glycerol, 0.5% BSA and 0.02% sodium azide.
Source	Polyclonal, Rabbit, IgG
Purification	The antibody was affinity-purified from rabbit serum by affinity-chromatography using specific immunogen.
Dilution	WB 1:500-2000; IHC-p 1:50-300; ELISA 2000-20000
Concentration	1 mg/ml
Purity	≥90%
Storage Stability	-20°C/1 year
Synonyms	
Observed Band	
Cell Pathway	Mitochondrion . Mitochondrion matrix, mitochondrion nucleoid .
Tissue Specificity	Expressed in skeletal muscle, heart, liver and pancreas.
Function	function: Involved in cell cycle regulation. May participate in the regulation of cell growth through the modulation of mitochondrial transcription. May act as a transcription termination factor., similarity: Belongs to the mTERF family., tissue specificity: Expressed in skeletal muscle, heart, liver and pancreas.,
Background	
matters needing attention	Avoid repeated freezing and thawing!
Usage suggestions	This product can be used in immunological reaction related experiments. For more information, please consult technical personnel.



Products Images



Western blot analysis of lysates from SH-SY5Y cells, primary antibody was diluted at 1:1000, 4° over night



Immunohistochemical analysis of paraffin-embedded human cervical carcinoma. 1, Antibody was diluted at 1:200(4° overnight). 2, Tris-EDTA, pH9.0 was used for antigen retrieval. 3, Secondary antibody was diluted at 1:200(room temperature, 45min).