

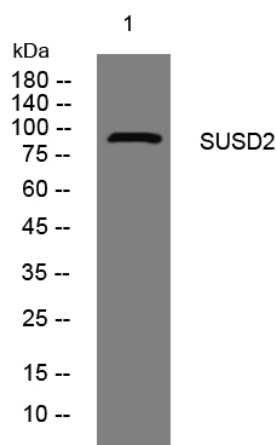


SUSD2 rabbit pAb

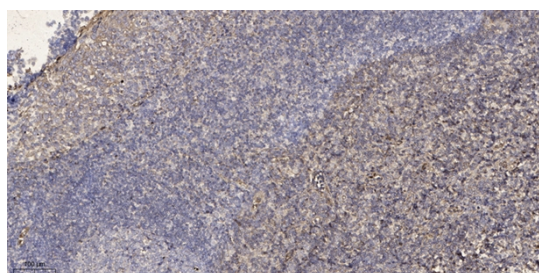
Catalog No	YP-Ab-11444
Isotype	IgG
Reactivity	Human; Mouse
Applications	WB;IHC
Gene Name	SUSD2
Protein Name	SUSD2
Immunogen	Synthesized peptide derived from human SUSD2 AA range: 666-716
Specificity	This antibody detects endogenous levels of SUSD2 at Human/Mouse
Formulation	Liquid in PBS containing 50% glycerol, 0.5% BSA and 0.02% sodium azide.
Source	Polyclonal, Rabbit,IgG
Purification	The antibody was affinity-purified from rabbit serum by affinity-chromatography using specific immunogen.
Dilution	WB 1:500-2000;IHC-p 1:50-300
Concentration	1 mg/ml
Purity	≥90%
Storage Stability	-20°C/1 year
Synonyms	
Observed Band	
Cell Pathway	Cell membrane ; Single-pass type I membrane protein . SUSD2 and LGALS1 co-localized in very specific, punctate regions along the cell membrane of breast cancer cells. .
Tissue Specificity	Highly expressed in breast cancer, but shows a restricted expression pattern in normal tissues such as adipose, adrenal gland, kidney, lung, mammary gland, placenta, thyroid, trachea, and uterus (PubMed:23131994). Also expressed in colon; down-regulated in colon cancer tissues (PubMed:25351403).
Function	similarity:Contains 1 AMOP domain.,similarity:Contains 1 SMB (somatomedin-B) domain.,similarity:Contains 1 Sushi (CCP/SCR) domain.,similarity:Contains 1 VWFD domain.,
Background	
matters needing attention	Avoid repeated freezing and thawing!
Usage suggestions	This product can be used in immunological reaction related experiments. For more information, please consult technical personnel.



Products Images



Western blot analysis of lysates from SH-SY5Y cells, primary antibody was diluted at 1:1000, 4° over night



Immunohistochemical analysis of paraffin-embedded human tonsil. 1, Antibody was diluted at 1:200 (4° overnight). 2, Tris-EDTA, pH 9.0 was used for antigen retrieval. 3, Secondary antibody was diluted at 1:200 (room temperature, 45 min).