



NPC2 rabbit pAb

Catalog No	YP-Ab-11438
Isotype	IgG
Reactivity	Human; Mouse
Applications	WB
Gene Name	NPC2 HE1
Protein Name	NPC2
Immunogen	Synthesized peptide derived from human NPC2 AA range: 9-59
Specificity	This antibody detects endogenous levels of NPC2 at Human/Mouse
Formulation	Liquid in PBS containing 50% glycerol, 0.5% BSA and 0.02% sodium azide.
Source	Polyclonal, Rabbit,IgG
Purification	The antibody was affinity-purified from rabbit serum by affinity-chromatography using specific immunogen.
Dilution	WB 1: 500-2000
Concentration	1 mg/ml
Purity	≥90%
Storage Stability	-20°C/1 year
Synonyms	
Observed Band	
Cell Pathway	Secreted . Endoplasmic reticulum . Lysosome . Interaction with cell-surface M6PR mediates endocytosis and targeting to lysosomes. .
Tissue Specificity	Detected in gallbladder bile (PubMed:21315718). Detected in fibroblasts, kidney, liver, spleen, small intestine, placenta and testis (at protein level) (PubMed:11125141). Epididymis.
Function	disease:Defects in NPC2 are the cause of Niemann-Pick disease type C2 (NPC2) [MIM:607625]. NPC2 is a fatal autosomal recessive hereditary disease characterized by the accumulation of low-density lipoprotein-derived cholesterol in lysosomes.,function:May be involved in the regulation of the lipid composition of sperm membranes during the maturation in the epididymis.,similarity:Belongs to the NPC2 family.,tissue specificity:Epididymis.,
Background	This gene encodes a protein containing a lipid recognition domain. The encoded protein may function in regulating the transport of cholesterol through the late endosomal/lysosomal system. Mutations in this gene have been associated with Niemann-Pick disease, type C2 and frontal lobe atrophy. [provided by RefSeq, Jul 2008],



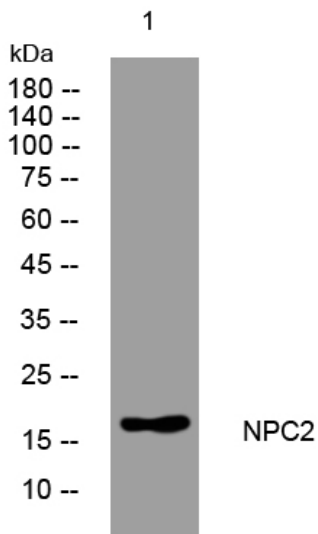
matters needing attention

Avoid repeated freezing and thawing!

Usage suggestions

This product can be used in immunological reaction related experiments. For more information, please consult technical personnel.

Products Images



Western blot analysis of lysates from U2OS cells, primary antibody was diluted at 1:1000, 4° over night