

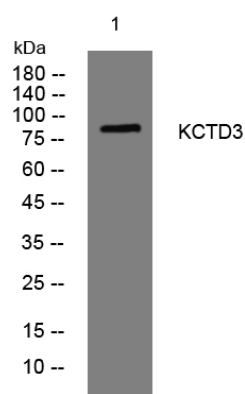


# KCTD3 rabbit pAb

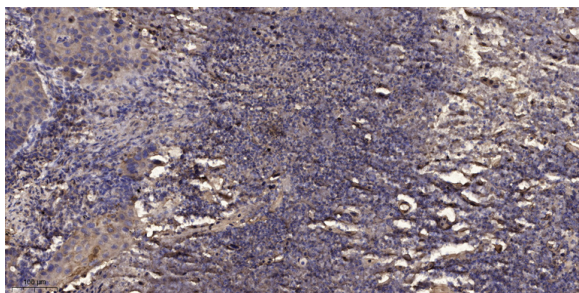
|                                  |                                                                                                                                                                                                                                                                                                                                                                                                                                                                               |
|----------------------------------|-------------------------------------------------------------------------------------------------------------------------------------------------------------------------------------------------------------------------------------------------------------------------------------------------------------------------------------------------------------------------------------------------------------------------------------------------------------------------------|
| <b>Catalog No</b>                | YP-Ab-11415                                                                                                                                                                                                                                                                                                                                                                                                                                                                   |
| <b>Isotype</b>                   | IgG                                                                                                                                                                                                                                                                                                                                                                                                                                                                           |
| <b>Reactivity</b>                | Human; Mouse                                                                                                                                                                                                                                                                                                                                                                                                                                                                  |
| <b>Applications</b>              | WB;IHC                                                                                                                                                                                                                                                                                                                                                                                                                                                                        |
| <b>Gene Name</b>                 | KCTD3                                                                                                                                                                                                                                                                                                                                                                                                                                                                         |
| <b>Protein Name</b>              | KCTD3                                                                                                                                                                                                                                                                                                                                                                                                                                                                         |
| <b>Immunogen</b>                 | Synthesized peptide derived from human KCTD3 AA range: 360-410                                                                                                                                                                                                                                                                                                                                                                                                                |
| <b>Specificity</b>               | This antibody detects endogenous levels of KCTD3 at Human/Mouse                                                                                                                                                                                                                                                                                                                                                                                                               |
| <b>Formulation</b>               | Liquid in PBS containing 50% glycerol, 0.5% BSA and 0.02% sodium azide.                                                                                                                                                                                                                                                                                                                                                                                                       |
| <b>Source</b>                    | Polyclonal, Rabbit,IgG                                                                                                                                                                                                                                                                                                                                                                                                                                                        |
| <b>Purification</b>              | The antibody was affinity-purified from rabbit serum by affinity-chromatography using specific immunogen.                                                                                                                                                                                                                                                                                                                                                                     |
| <b>Dilution</b>                  | WB 1:500-2000;IHC-p 1:50-300                                                                                                                                                                                                                                                                                                                                                                                                                                                  |
| <b>Concentration</b>             | 1 mg/ml                                                                                                                                                                                                                                                                                                                                                                                                                                                                       |
| <b>Purity</b>                    | ≥90%                                                                                                                                                                                                                                                                                                                                                                                                                                                                          |
| <b>Storage Stability</b>         | -20°C/1 year                                                                                                                                                                                                                                                                                                                                                                                                                                                                  |
| <b>Synonyms</b>                  |                                                                                                                                                                                                                                                                                                                                                                                                                                                                               |
| <b>Observed Band</b>             |                                                                                                                                                                                                                                                                                                                                                                                                                                                                               |
| <b>Cell Pathway</b>              | Cell membrane .                                                                                                                                                                                                                                                                                                                                                                                                                                                               |
| <b>Tissue Specificity</b>        | Broadly expressed in normal tissues.                                                                                                                                                                                                                                                                                                                                                                                                                                          |
| <b>Function</b>                  | miscellaneous:Reacts with sera from 5-25 per cent of cancer patients but not with sera from normal donors. Seventy per cent of renal cancer patients have antibodies against one or a panel of these antigens.,sequence caution:Contaminating sequence. Potential poly-A sequence.,similarity:Belongs to the KCTD3 family.,similarity:Contains 1 BTB (POZ) domain.,similarity:Contains 5 WD repeats.,tissue specificity:Broadly expressed in normal tissues.,                 |
| <b>Background</b>                | This gene encodes a member of the potassium channel tetramerization-domain containing (KCTD) protein family. Members of this protein family regulate the biophysical characteristics of ion channels. In mouse, this protein interacts with hyperpolarization-activated cyclic nucleotide-gated channel complex 3 and enhances its cell surface expression and current density. Alternative splicing results in multiple transcript variants. [provided by RefSeq, Feb 2016], |
| <b>matters needing attention</b> | Avoid repeated freezing and thawing!                                                                                                                                                                                                                                                                                                                                                                                                                                          |

**Usage suggestions**

This product can be used in immunological reaction related experiments. For more information, please consult technical personnel.

**Products Images**

Western blot analysis of lysates from KB cells, primary antibody was diluted at 1:1000, 4° over night



Immunohistochemical analysis of paraffin-embedded human Squamous cell carcinoma of lung. 1, Antibody was diluted at 1:200(4° overnight). 2, Tris-EDTA, pH9.0 was used for antigen retrieval. 3, Secondary antibody was diluted at 1:200(room temperature, 45min).