



# MKRN1 rabbit pAb

<b>Catalog No</b>	YP-Ab-11414
<b>Isotype</b>	IgG
<b>Reactivity</b>	Human; Mouse
<b>Applications</b>	WB
<b>Gene Name</b>	MKRN1 RNF61
<b>Protein Name</b>	MKRN1
<b>Immunogen</b>	Synthesized peptide derived from human MKRN1 AA range: 333-383
<b>Specificity</b>	This antibody detects endogenous levels of MKRN1 at Human/Mouse
<b>Formulation</b>	Liquid in PBS containing 50% glycerol, 0.5% BSA and 0.02% sodium azide.
<b>Source</b>	Polyclonal, Rabbit,IgG
<b>Purification</b>	The antibody was affinity-purified from rabbit serum by affinity-chromatography using specific immunogen.
<b>Dilution</b>	WB 1: 500-2000
<b>Concentration</b>	1 mg/ml
<b>Purity</b>	≥90%
<b>Storage Stability</b>	-20°C/1 year
<b>Synonyms</b>	
<b>Observed Band</b>	
<b>Cell Pathway</b>	
<b>Tissue Specificity</b>	Ubiquitous.
<b>Function</b>	caution:Could be the product of a pseudogene.,similarity:Contains 1 RING-type zinc finger.,similarity:Contains 4 C3H1-type zinc fingers.,tissue specificity:Ubiquitous.,
<b>Background</b>	This gene encodes a protein that belongs to a novel class of zinc finger proteins. The encoded protein functions as a transcriptional co-regulator, and as an E3 ubiquitin ligase that promotes the ubiquitination and proteasomal degradation of target proteins. The protein encoded by this gene is thought to regulate RNA polymerase II-catalyzed transcription. Substrates for this protein's E3 ubiquitin ligase activity include the capsid protein of the West Nile virus and the catalytic subunit of the telomerase ribonucleoprotein. This protein controls cell cycle arrest and apoptosis by regulating p21, a cell cycle regulator, and the tumor suppressor protein p53. Pseudogenes of this gene are present on chromosomes 1, 3, 9, 12 and 20, and on the X chromosome. Alternative splicing results in multiple transcript variants encoding different isoforms. [provided by RefSeq, Apr 2014],

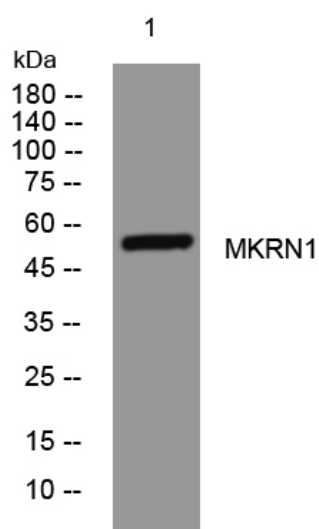
**matters needing attention**

Avoid repeated freezing and thawing!

**Usage suggestions**

This product can be used in immunological reaction related experiments. For more information, please consult technical personnel.

## Products Images



Western blot analysis of lysates from HpeG2 cells, primary antibody was diluted at 1:1000, 4° over night