

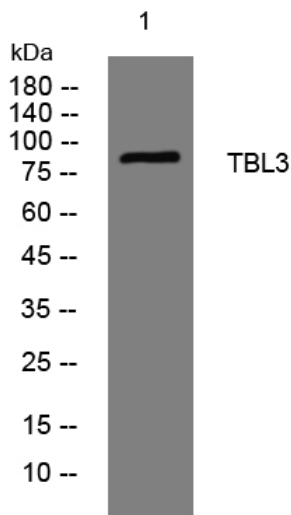


# TBL3 rabbit pAb

|                                  |  |
|----------------------------------|--|
| <b>Catalog No</b>                | YP-Ab-11389  |
| <b>Isotype</b>                   | IgG  |
| <b>Reactivity</b>                | Human; Mouse; Rat  |
| <b>Applications</b>              | WB   |
| <b>Gene Name</b>                 | TBL3 SAZD  |
| <b>Protein Name</b>              | TBL3   |
| <b>Immunogen</b>                 | Synthesized peptide derived from human TBL3 AA range: 486-536  |
| <b>Specificity</b>               | This antibody detects endogenous levels of TBL3 at Human/Mouse/Rat   |
| <b>Formulation</b>               | Liquid in PBS containing 50% glycerol, 0.5% BSA and 0.02% sodium azide.  |
| <b>Source</b>                    | Polyclonal, Rabbit, IgG  |
| <b>Purification</b>              | The antibody was affinity-purified from rabbit serum by affinity-chromatography using specific immunogen.  |
| <b>Dilution</b>                  | WB 1: 500-2000   |
| <b>Concentration</b>             | 1 mg/ml  |
| <b>Purity</b>                    | ≥90%   |
| <b>Storage Stability</b>         | -20°C/1 year   |
| <b>Synonyms</b>                  |  |
| <b>Observed Band</b>             |  |
| <b>Cell Pathway</b>              | Nucleus, nucleolus .   |
| <b>Tissue Specificity</b>        |  |
| <b>Function</b>                  | similarity: Contains 13 WD repeats.,   |
| <b>Background</b>                | The protein encoded by this gene has sequence similarity with members of the WD40 repeat-containing protein family. The WD40 group is a large family of proteins, which appear to have a regulatory function. It is believed that the WD40 repeats mediate protein-protein interactions and members of the family are involved in signal transduction, RNA processing, gene regulation, vesicular trafficking, cytoskeletal assembly and may play a role in the control of cytotypic differentiation. This gene has multiple polyadenylation sites. It might have multiple alternatively spliced transcript variants but the variants have not been fully described yet. [provided by RefSeq, Jul 2008], |
| <b>matters needing attention</b> | Avoid repeated freezing and thawing!   |

**Usage suggestions**

This product can be used in immunological reaction related experiments. For more information, please consult technical personnel.

**Products Images**

Western blot analysis of lysates from HeLa cells,  
primary antibody was diluted at 1:1000, 4° over night