



AP4E1 rabbit pAb

Catalog No	YP-Ab-11384
Isotype	IgG
Reactivity	Human; Mouse
Applications	WB
Gene Name	AP4E1
Protein Name	AP4E1
Immunogen	Synthesized peptide derived from human AP4E1 AA range: 104-154
Specificity	This antibody detects endogenous levels of AP4E1 at Human/Mouse
Formulation	Liquid in PBS containing 50% glycerol, 0.5% BSA and 0.02% sodium azide.
Source	Polyclonal, Rabbit,IgG
Purification	The antibody was affinity-purified from rabbit serum by affinity-chromatography using specific immunogen.
Dilution	WB 1: 500-2000
Concentration	1 mg/ml
Purity	≥90%
Storage Stability	-20°C/1 year
Synonyms	
Observed Band	
Cell Pathway	Golgi apparatus, trans-Golgi network membrane ; Peripheral membrane protein .
Tissue Specificity	Widely expressed.
Function	function:Subunit of novel type of clathrin- or non-clathrin-associated protein coat involved in targeting proteins from the trans-Golgi network (TGN) to the endosomal-lysosomal system.,similarity:Belongs to the adaptor complexes large subunit family.,subcellular location:Associated with the trans-Golgi network. Found in soma and dendritic shafts of neuronal cells.,subunit:Adapter-like complex 4 (AP-4) is a heterotetramer composed of two large adaptins (epsilon-type subunit AP4E1 and beta-type subunit AP4B1), a medium adaptin (mu-type subunit AP4M1) and a small adaptin (sigma-type AP4S1).,tissue specificity:Widely expressed.,
Background	This gene encodes a member of the adaptor complexes large subunit protein family. These proteins are components of the heterotetrameric adaptor protein complexes, which play important roles in the secretory and endocytic pathways by mediating vesicle formation and sorting of integral membrane proteins. The encoded protein is a large subunit of adaptor protein complex-4, which is associated with both clathrin- and nonclathrin-coated vesicles. Disruption of this



gene may be associated with cerebral palsy. Alternatively spliced transcript variants encoding multiple isoforms have been observed for this gene. [provided by RefSeq, Nov 2011],

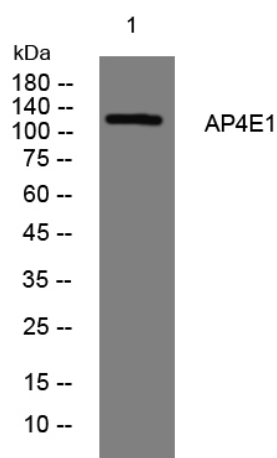
matters needing attention

Avoid repeated freezing and thawing!

Usage suggestions

This product can be used in immunological reaction related experiments. For more information, please consult technical personnel.

Products Images



Western blot analysis of lysates from U2OS cells, primary antibody was diluted at 1:1000, 4° over night