

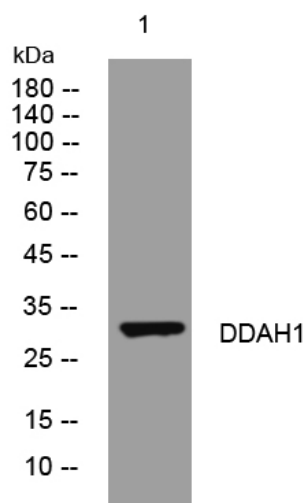


# DDAH1 rabbit pAb

<b>Catalog No</b>	YP-Ab-11357
<b>Isotype</b>	IgG
<b>Reactivity</b>	Human; Mouse; Rat
<b>Applications</b>	WB
<b>Gene Name</b>	DDAH1 DDAH
<b>Protein Name</b>	DDAH1
<b>Immunogen</b>	Synthesized peptide derived from human DDAH1 AA range: 115-165
<b>Specificity</b>	This antibody detects endogenous levels of DDAH1 at Human/Mouse/Rat
<b>Formulation</b>	Liquid in PBS containing 50% glycerol, 0.5% BSA and 0.02% sodium azide.
<b>Source</b>	Polyclonal, Rabbit, IgG
<b>Purification</b>	The antibody was affinity-purified from rabbit serum by affinity-chromatography using specific immunogen.
<b>Dilution</b>	WB 1: 500-2000
<b>Concentration</b>	1 mg/ml
<b>Purity</b>	≥90%
<b>Storage Stability</b>	-20°C/1 year
<b>Synonyms</b>	
<b>Observed Band</b>	
<b>Cell Pathway</b>	mitochondrion, cytosol, extracellular exosome,
<b>Tissue Specificity</b>	Detected in brain, liver, kidney and pancreas, and at low levels in skeletal muscle.
<b>Function</b>	catalytic activity: N(omega), N(omega)-dimethyl-L-arginine + H <sub>2</sub> O = dimethylamine + L-citrulline., cofactor: Binds 1 zinc ion., function: Hydrolyzes N(G), N(G)-dimethyl-L-arginine (ADMA) and N(G)-monomethyl-L-arginine (MMA) which act as inhibitors of NOS. Has therefore a role in nitric oxide generation., similarity: Belongs to the DDAH family., subunit: Monomer.,
<b>Background</b>	This gene belongs to the dimethylarginine dimethylaminohydrolase (DDAH) gene family. The encoded enzyme plays a role in nitric oxide generation by regulating cellular concentrations of methylarginines, which in turn inhibit nitric oxide synthase activity. [provided by RefSeq, Jul 2008],
<b>matters needing attention</b>	Avoid repeated freezing and thawing!

**Usage suggestions**

This product can be used in immunological reaction related experiments. For more information, please consult technical personnel.

**Products Images**

Western blot analysis of lysates from U2OS cells,  
primary antibody was diluted at 1:1000, 4° over night